



SCALE: 1/4" = 1'0"

DRAWN BY A. J. FEITH
 REGIONAL SALES CONSULTANT
 WESTCHESTER MODULAR
 HOMES, INC.

BUILDER:

DATE:
 JULY 2012

HOMEOWNER:

USE GROUP

5B

CONST. TYPE:

WOOD
 FRAME

BEDFORD

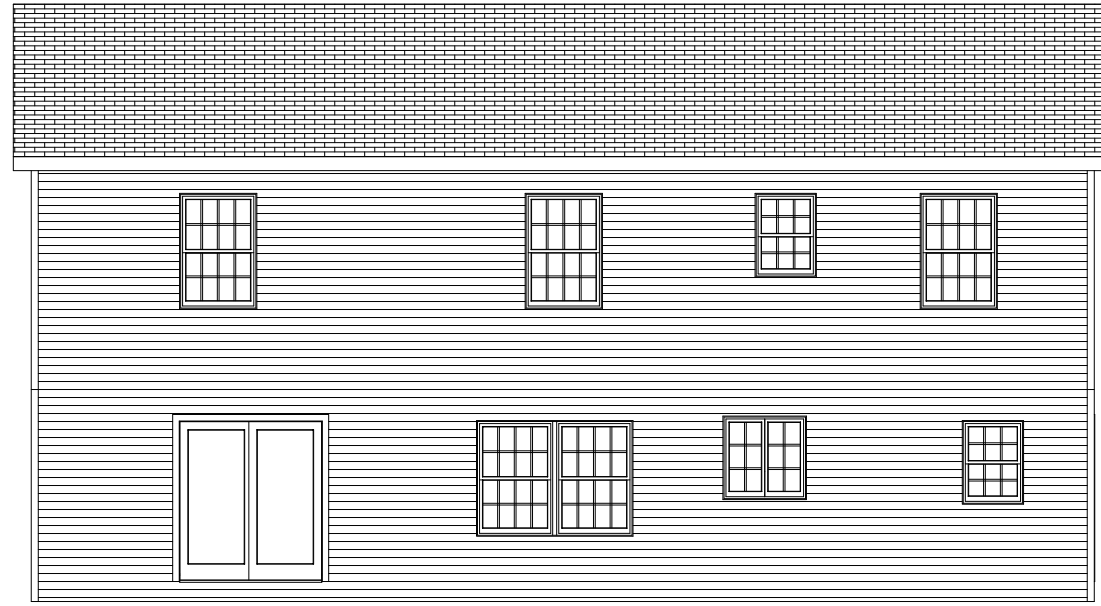
FRONT ELEVATION

PAGE:

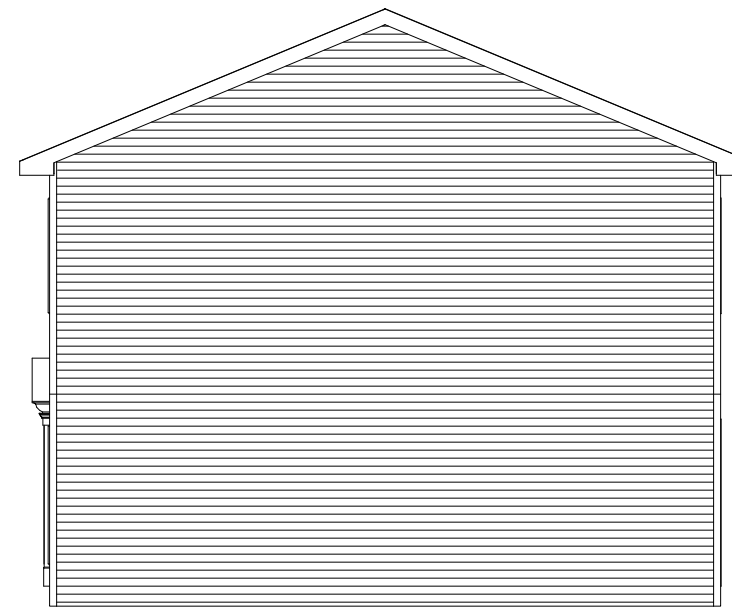
1A



LEFT



REAR



RIGHT

SCALE: 1/8" = 1'0"

DRAWN BY A. J. FEITH
REGIONAL SALES CONSULTANT
WESTCHESTER MODULAR
HOMES, INC.

BUILDER:

DATE:

JULY 2012

HOMEOWNER:

USE GROUP

5B

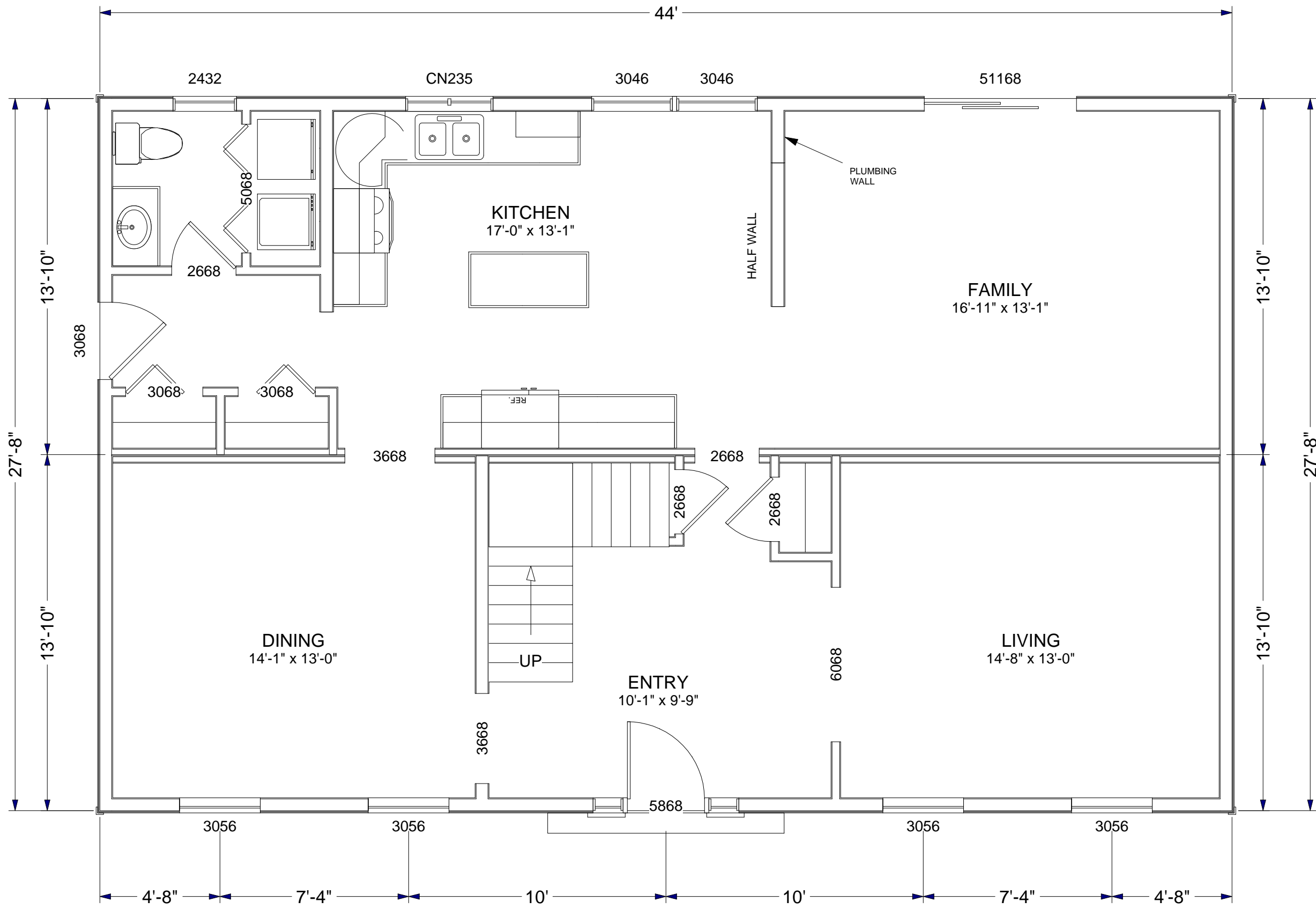
CONST. TYPE:

WOOD
FRAME

PAGE:

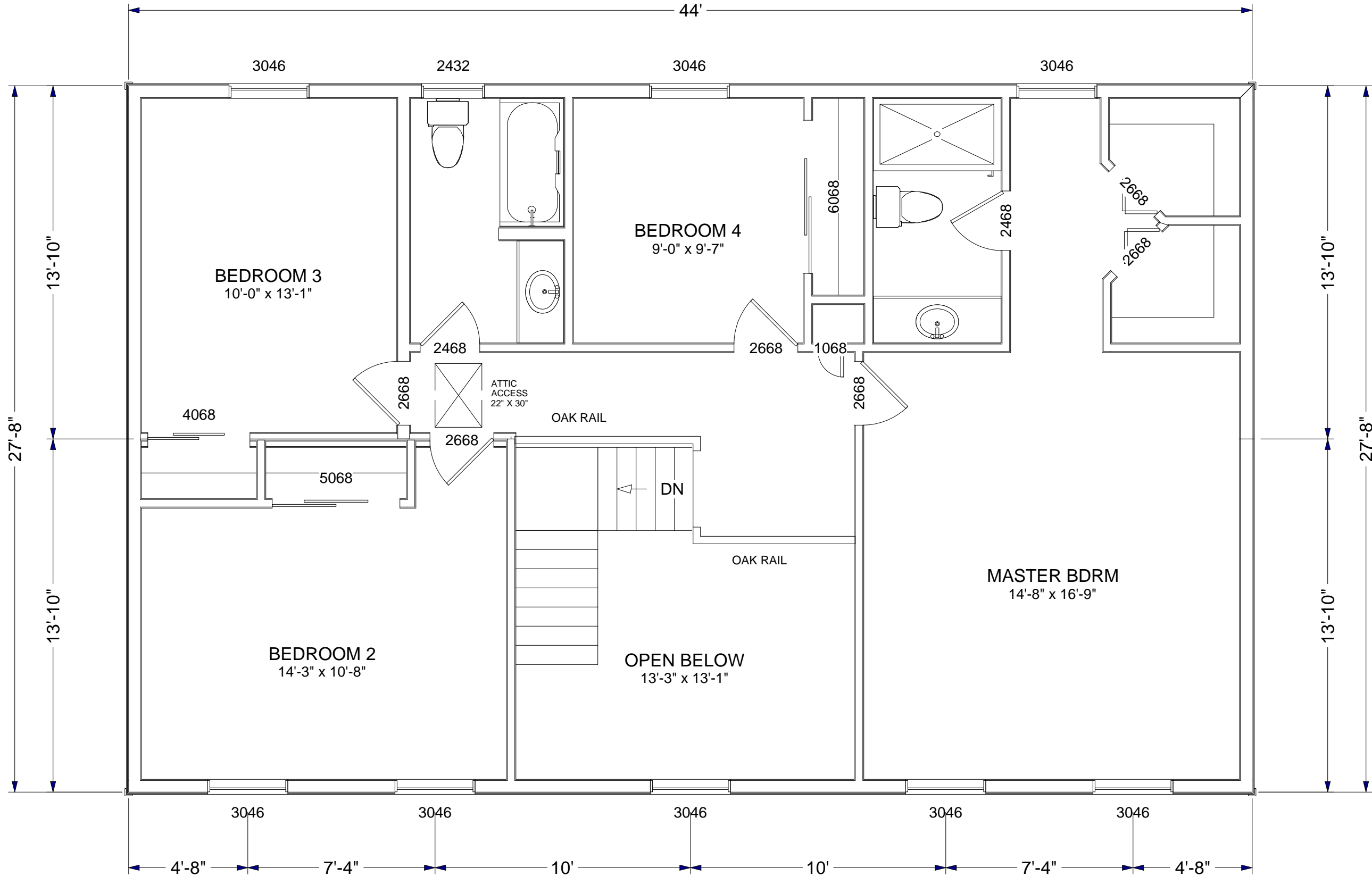
BEDFORD
SIDE AND REAR
ELEVATIONS

1B



SCALE: 1/4" = 1'0"

DRAWN BY A. J. FEITH REGIONAL SALES CONSULTANT WESTCHESTER MODULAR HOMES, INC.	BUILDER:	USE GROUP	PAGE:
	HOMEOWNER:	5B	2A
DATE: JULY 2012		CONST. TYPE: WOOD FRAME	BEDFORD FIRST FLOOR



DRAWN BY A. J. FEITH REGIONAL SALES CONSULTANT WESTCHESTER MODULAR HOMES, INC.	BUILDER:	USE GROUP	PAGE: 2B
	HOMEOWNER:	5B	
DATE: JULY 2012	CONST. TYPE: WOOD FRAME	BEDFORD SECOND FLOOR	