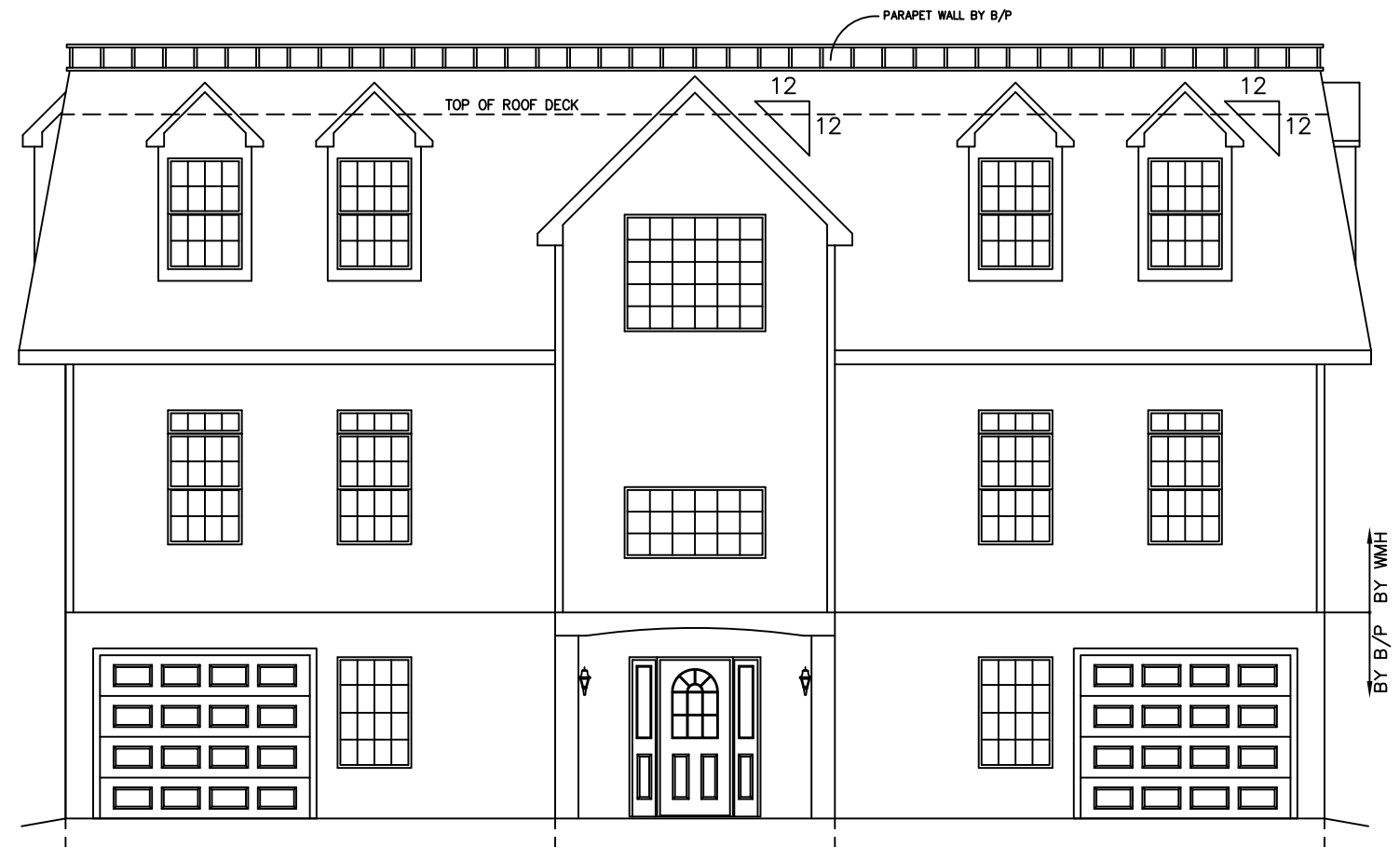
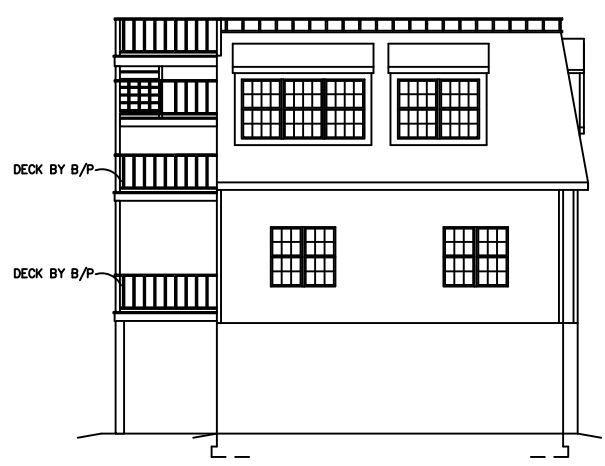


OVERHANG DIMENSION (*)			
ROOF PITCH	HOUSE WIDTH		
	24'-0"	26'-0"/30'-0"	27'-8"/31'-8"
5/12	16"	11"	16"
7/12	16"	11"	16"
9/12	12"	11"	12"
12/12	8 3/4"	8 3/4"	8 3/4"

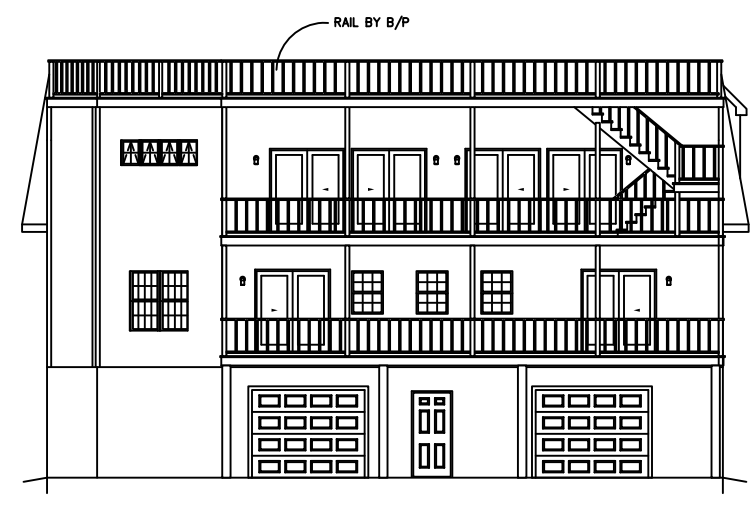
NOTE:  
WINDOW GRILLE PATTERNS SHOWN ARE FOR ANDERSEN WINDOWS.  
GRILLE PATTERNS FOR OTHER MANUFACTURERS MAY BE DIFFERENT.



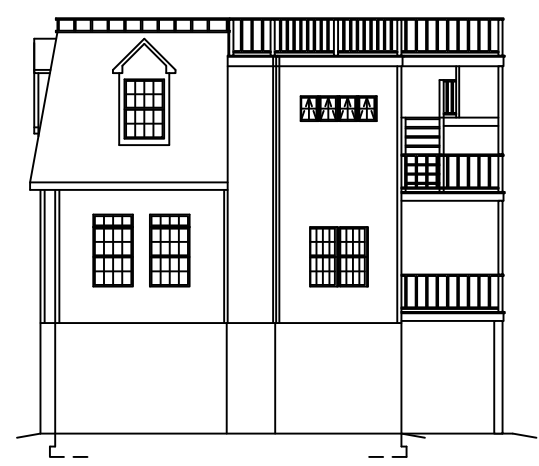
ALL EXT. STAIRS, STEPS, RAILS & GUARDS TO BE DESIGNED, SUPPLIED AND INSTALLED BY B/P  
FRONT ELEVATION  
SCALE: 3/16"=1'-0"  
\* DELETE SIDING FRONT ONLY \*



LEFT ELEVATION  
SCALE: 3/32"=1'-0"



REAR ELEVATION  
SCALE: 3/32"=1'-0"



RIGHT ELEVATION  
SCALE: 3/32"=1'-0"

SEE STANDARD NOTES & DETAILS DWG #8

THIRD PARTY INSPECTION AGENCY

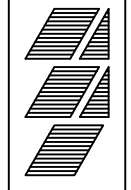
PE / RA

SERIAL No.	08134
PRODUCTION No.	5446
REVISION	DATE
PRELIMINARY	8/18/08
	10/15/08
CHECK	DATE

BUILDER: HOMEOWNER:

COLONIAL CTN-L  
ELEVATIONS

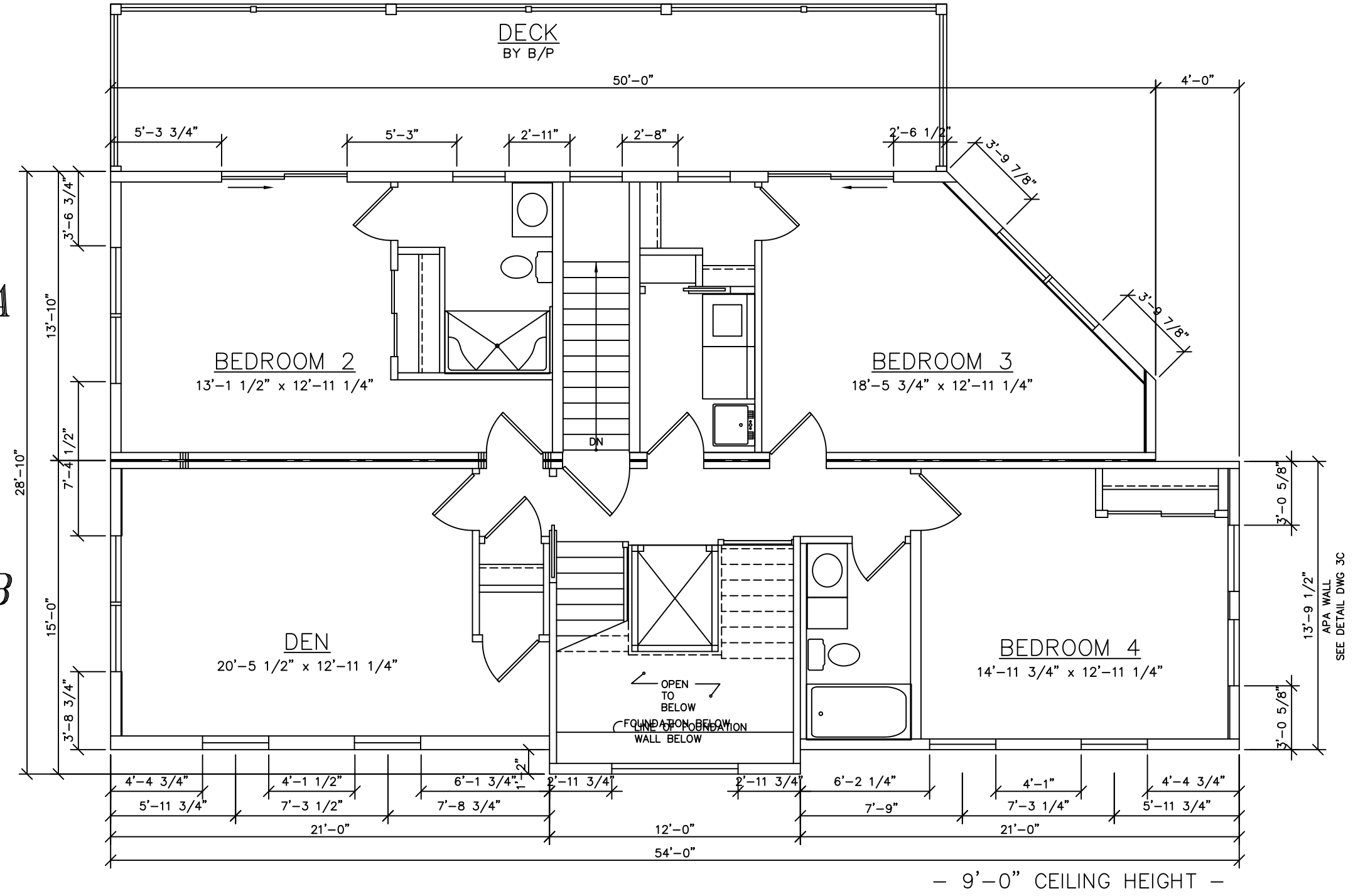
Westchester Modular Homes Inc  
30 Reagans Mill Road, Wingdale, New York, 12594  
Tel (845)832-9400 Fax (845)832-6698



USE GROUP:	R5
CONST. TYPE:	VA
DESIGNER:	P. Watter
DATE:	8/15/08
SCALE:	AS NOTED
PAGE:	1

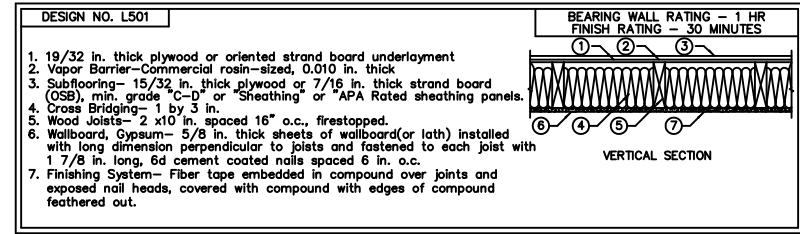
A

B



- 9'-0" CEILING HEIGHT -

LIGHT & VENTILATION SCHEDULE (SF)			
ROOM	AREA	LIGHT SUPPLIED	VENT SUPPLIED
DEN	265	43.5	22.92
BEDROOM 2	170	42.5	27.57
BEDROOM 3	239	42.5	27.57
BEDROOM 4	194	45.8	22.92



SEE STANDARD NOTES & DETAILS DWG #8  
THIRD PARTY INSPECTION AGENCY

PE / RA

SERIAL No.	08134
PRODUCTION No.	5446
REVISION	DATE
PRELIMINARY	8/18/08
	10/15/08
	11/24/08
	1/06/09
CHECK	DATE

HOMEOWNER:

BUILDER:

USE GROUP: R5

CONST. TYPE: VA

DESIGNER: P. Watter

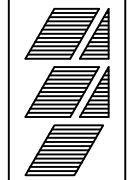
DATE: 8/15/08

SCALE: 1/4" = 1'-0"

PAGE: 3A

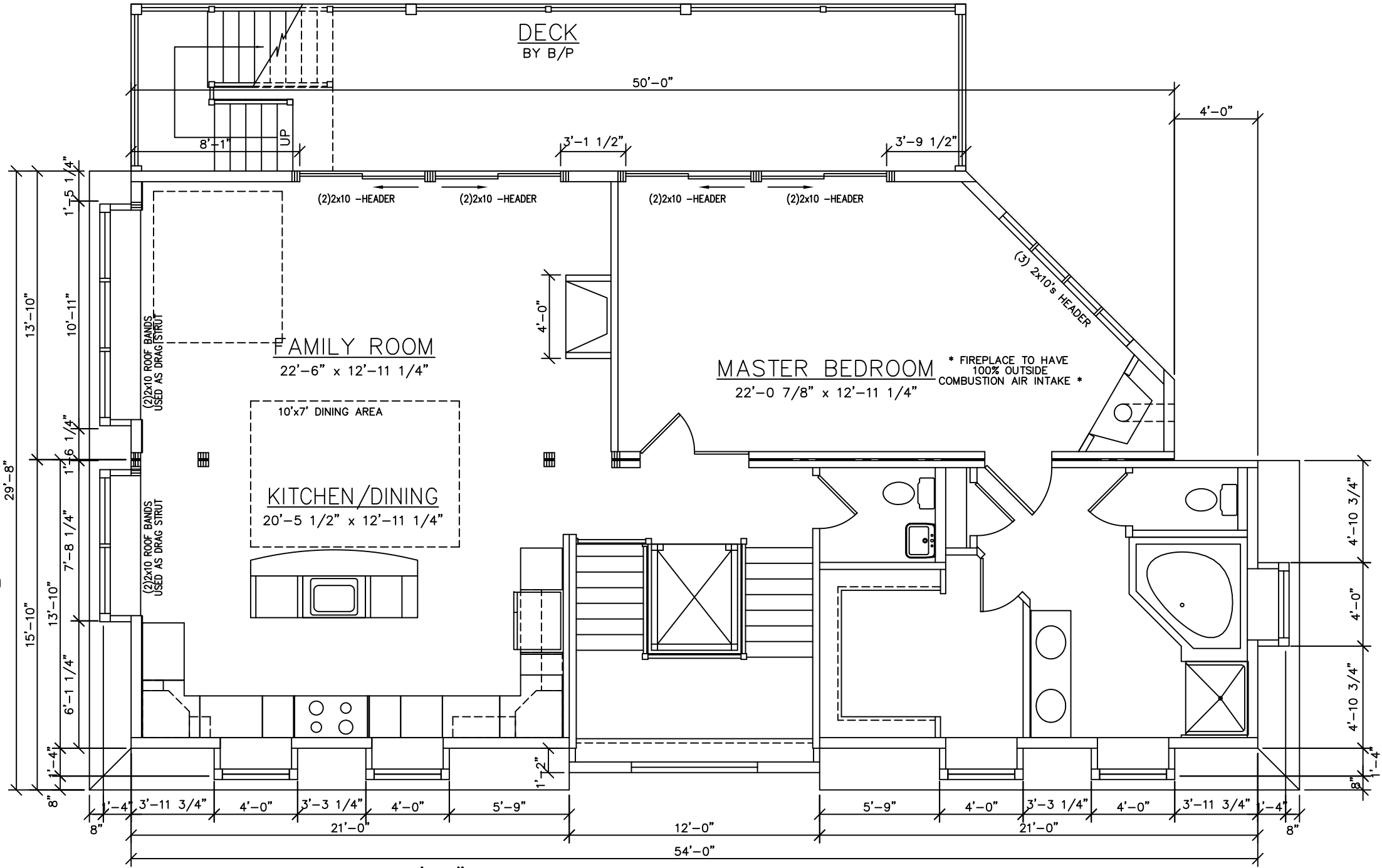
COLONIAL CTM-L  
FIRST FLOOR PLAN

Westchester Modular Homes Inc  
30 Reagans Mill Road, Wingdale, New York, 12594  
Tel (845)832-9400 Fax (845)832-6698



C

D



- 9'-0" CEILING HEIGHT -

DESIGN NO. L501

BEARING WALL RATING - 1 HR  
FINISH RATING - 30 MINUTES

- 19/32 in. thick plywood or oriented strand board underlayment
- Vapor Barrier-Commercial rosin-sized, 0.010 in. thick
- Subflooring- 15/32 in. thick plywood or 7/16 in. thick strand board (OSB), min. grade "C-D" or "Sheathing" or "APA Rated sheathing panels.
- Cross Bridging- 1 by 3 in.
- Wood Joists- 2 x10 in, spaced 16" o.c., freestopped.
- Wallboard, Gypsum- 5/8 in. thick sheets of wallboard(or lath) installed with long dimension perpendicular to joists and fastened to each joist with 1 7/8 in. long, 6d cement coated nails spaced 6 in. o.c.
- Finishing System- Fiber tape embedded in compound over joints and exposed nail heads, covered with compound with edges of compound feathered out.

VERTICAL SECTION

SEE STANDARD NOTES & DETAILS DWG #8

PE / RA

THIRD PARTY INSPECTION AGENCY

SERIAL No. 08134

PRODUCTION No. 5446

REVISION	DATE
PRELIMINARY	8/18/08
	10/15/08
	11/24/08
	1/06/09
CHECK	DATE

HOMEOWNER:

BUILDER:

USE GROUP: R5

CONST. TYPE: VA

DESIGNER: P. Watter

DATE: 8/15/08

SCALE: 1/4" = 1'-0"

PAGE: 3B

# COLONIAL CTM-L SECOND FLOOR PLAN

Westchester Modular Homes Inc  
30 Reagans Mill Road, Wingdale, New York, 12594  
Tel (845)832-9400 Fax (845)832-6698

