

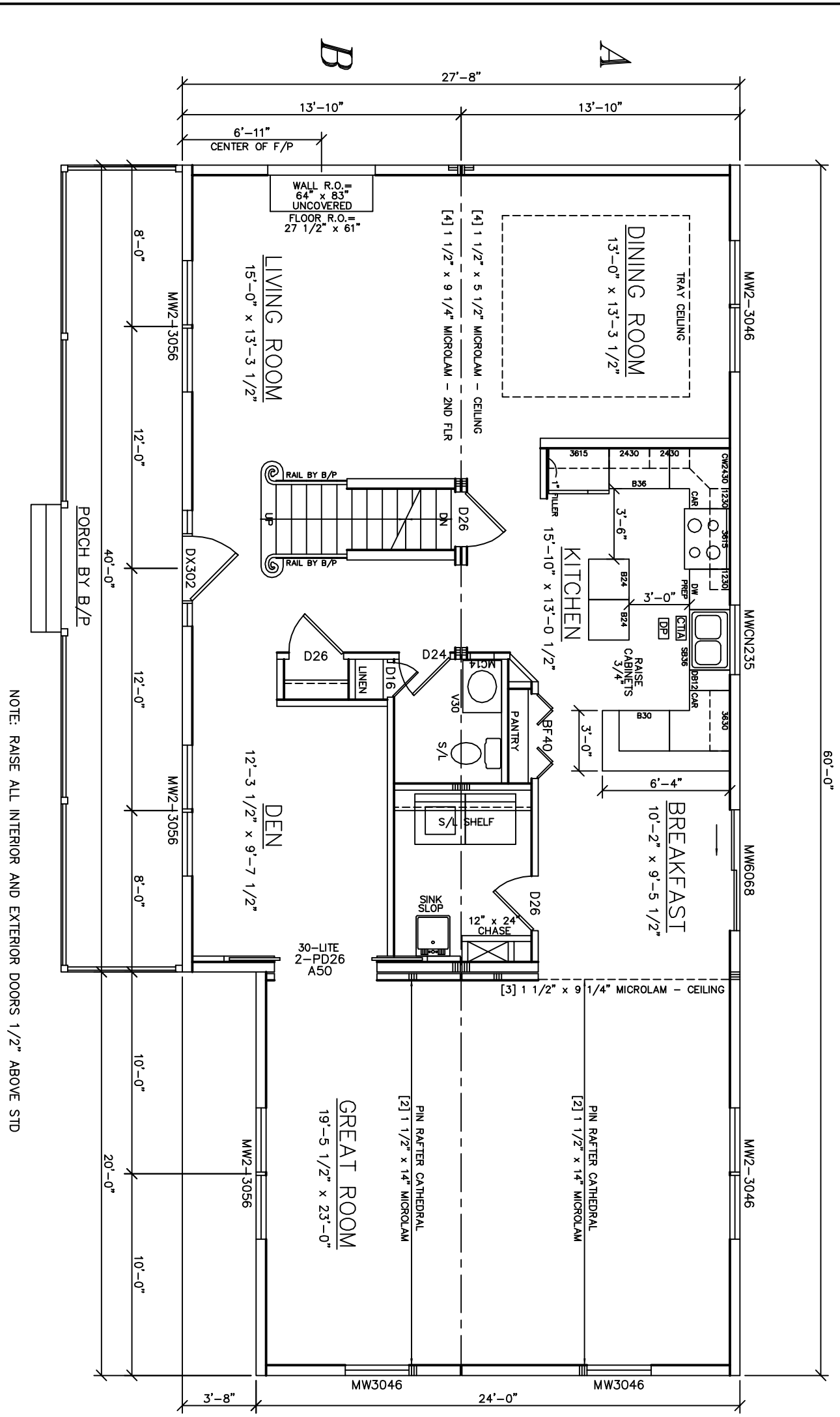
OVERHANG DIMENSION (*)			
ROOF PITCH	HOUSE WIDTH	27'-8"	27'-8"
24'-0"	26'-0"	11"	16"
5/12	16"	11"	16"
7/12	16"	11"	16"
9/12	12"	11"	12"
12/12	8 3/4"	8 3/4"	8 3/4"

NOTE:  
WINDOW GRILLE PATTERNS SHOWN ARE FOR ANDERSEN WINDOWS.  
GRILLE PATTERNS FOR OTHER MANUFACTURERS MAY BE DIFFERENT.

SEE STANDARD NOTES & DETAILS DWG #8

USE GROUP: <b>R4</b>	BUILDER:	HOMEOWNER:	SERIAL No. <b>03161</b>	PE / RA	THIRD PARTY INSPECTION AGENCY
CONST. TYPE: WOOD FRAME		SITE:	PRODUCTION No.		
DESIGNER: <b>JDW</b>	<b>COLONIAL CTM-L ELEVATIONS</b>		REVISION	DATE	
DATE: 06/14/03				06/25/03	
SCALE: 1/4" = 1'-0"			CHECK	DATE	
PAGE: <b>1</b>	<b>Westchester Modular Homes Inc</b> 30 Reagans Mill Road, Wingdale, New York, 12594 Tel (914)832-9400 Fax (914)832-6698				

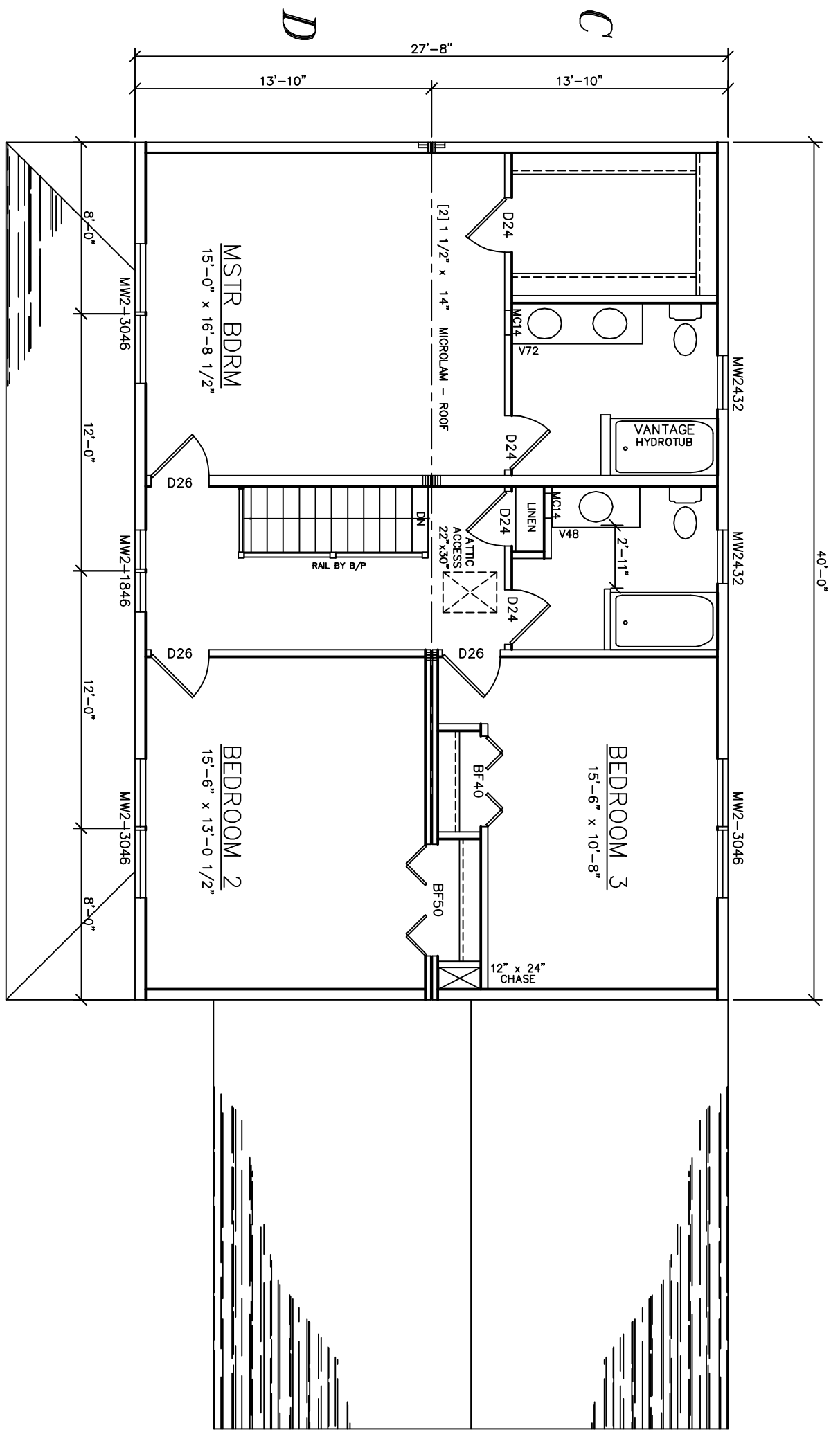
LIGHT & VENTILATION SCHEDULE (SF)			
ROOM	AREA	LIGHT SUPPLIED	VENT SUPPLIED
GREAT ROOM	448	68.4	36.3
DEN	118	26.4	12.10
LIVING ROOM	199	26.4	12.10
DINING ROOM	173	21.0	12.10
KIT/BREAKFAST	302	40.2	22.9



SEE STANDARD NOTES & DETAILS DWG #8

USE GROUP: R.4	BUILDER:	HOMEOWNER:	SERIAL No. <b>03161</b>	PE / RA	THIRD PARTY INSPECTION AGENCY
CONST. TYPE: WOOD FRAME		SITE:	PRODUCTION No.		
DESIGNER: <b>JDW</b>	<b>COLONIAL CTM-L</b> FIRST FLOOR PLAN			REVISION	DATE 06/25/03
DATE: 06/14/03					
SCALE: 1/4" = 1'-0"	Westchester Modular Homes Inc 30 Reagans Mill Road, Wingdale, New York, 12594 Tel (914)832-9400 Fax (914)832-6698			CHECK	DATE
PAGE: <b>3A</b>					

LIGHT & VENTILATION SCHEDULE (SF)			
ROOM	AREA	LIGHT SUPPLIED	VENT SUPPLIED
MASTER BDRM	251	21.0	12.10
BEDROOM 2	202	21.0	12.10
BEDROOM 3	165	21.0	12.10



NOTE: RAISE ALL INTERIOR AND EXTERIOR DOORS 1/2" ABOVE STD

SEE STANDARD NOTES & DETAILS DWG #8

USE GROUP: R.4	BUILDER:	HOMEOWNER:	SERIAL No. <b>03161</b>	PE / RA	THIRD PARTY INSPECTION AGENCY
CONST. TYPE: WOOD FRAME		SITE:	PRODUCTION No.		
DESIGNER: <b>JDW</b>	<b>COLONIAL CTM-L</b> <b>SECOND FLOOR PLAN</b>			REVISION	DATE
DATE: 06/14/03					06/25/03
SCALE: 1/4" = 1'-0"	<b>Westchester Modular Homes Inc</b> 30 Reagans Mill Road, Wingdale, New York, 12594 Tel (914)832-9400 Fax (914)832-6698			CHECK	DATE
PAGE: <b>3B</b>					