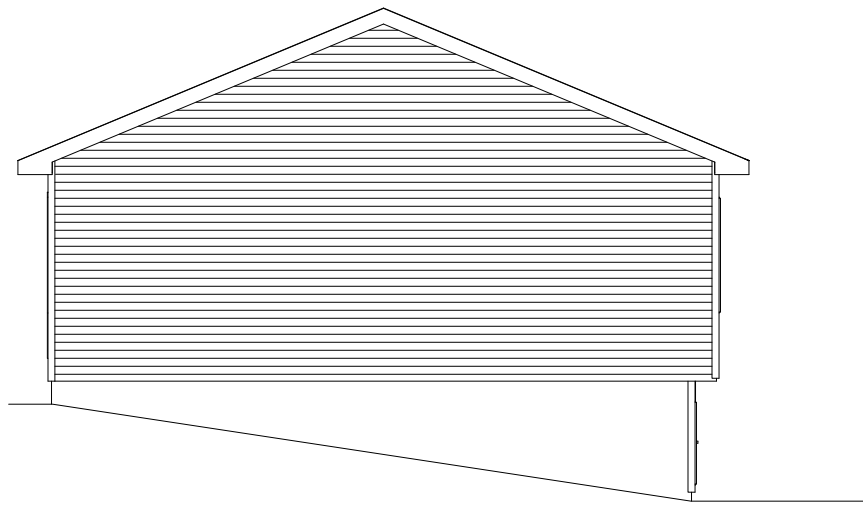


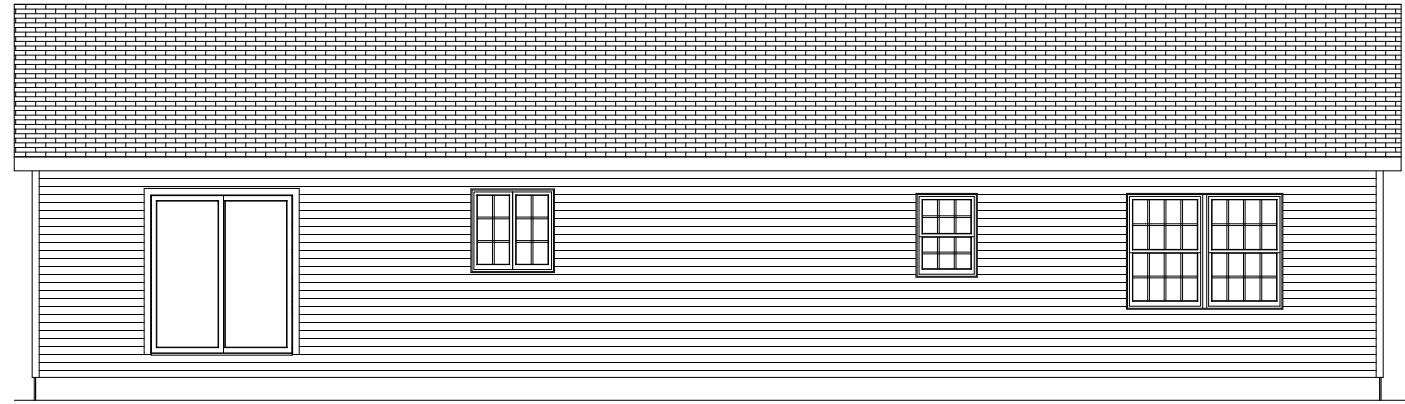


SCALE: 3/16" = 1'0"

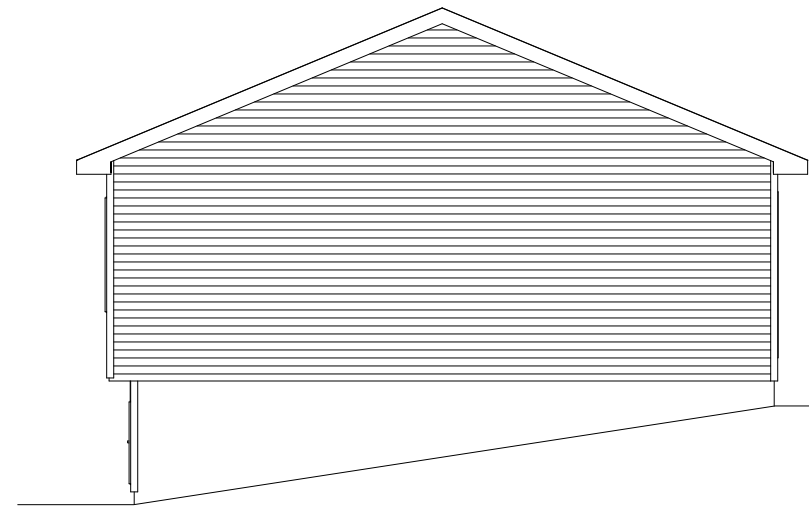
DRAWN BY A. J. FEITH REGIONAL SALES CONSULTANT WESTCHESTER MODULAR HOMES, INC.	BUILDER:	USE GROUP 5B	PAGE: 1A
DATE: JULY 2012	HOMEOWNER:	CONST. TYPE: WOOD FRAME	MANSFIELD FRONT ELEVATION



LEFT



REAR



RIGHT

SCALE: 1/8" = 1'0"

DRAWN BY A. J. FEITH
REGIONAL SALES CONSULTANT
WESTCHESTER MODULAR
HOMES, INC.

BUILDER:

DATE:

JULY 2012

HOMEOWNER:

USE GROUP

5B

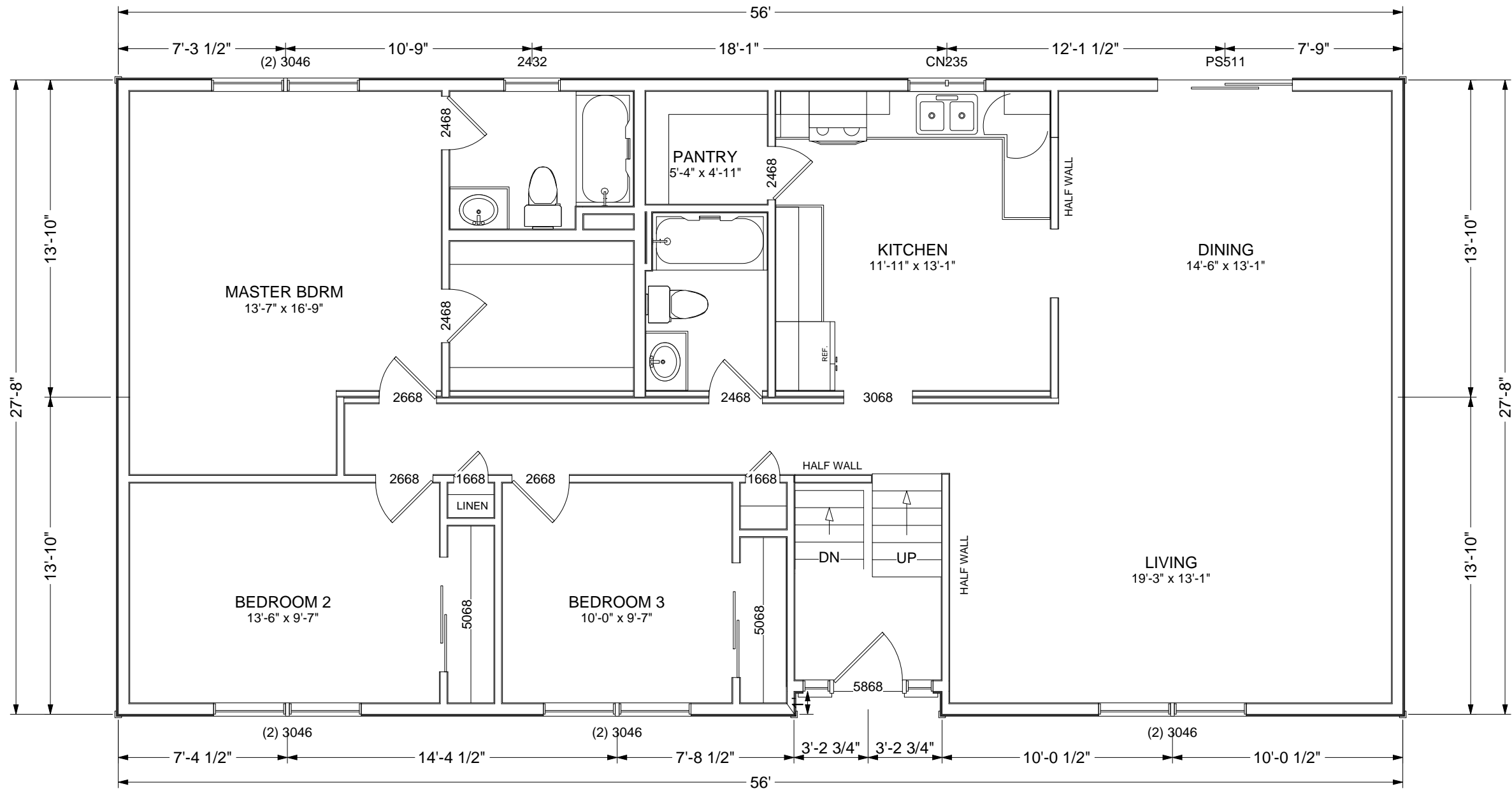
CONST. TYPE:

WOOD
FRAME

PAGE:

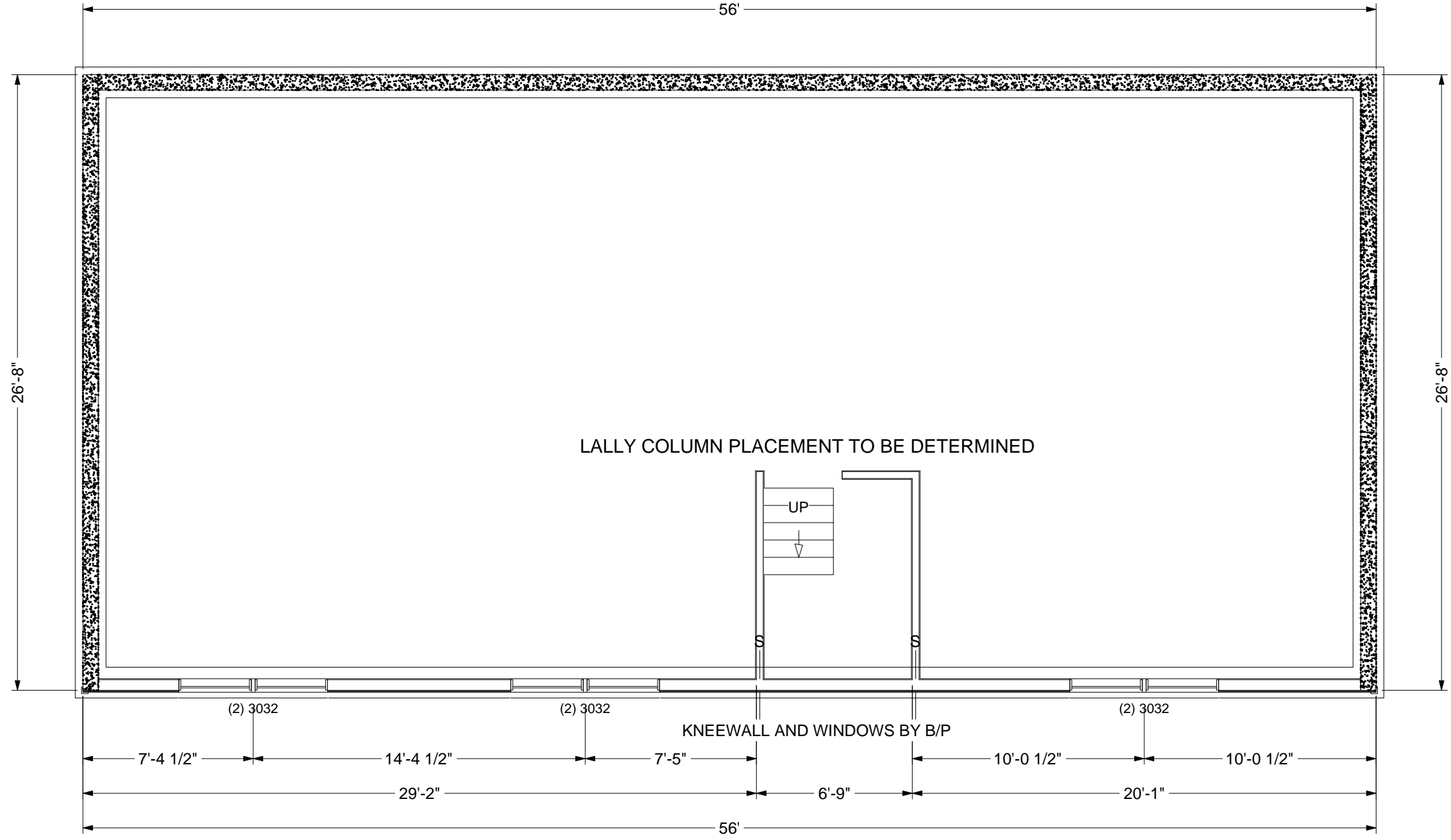
MANSFIELD
SIDE AND REAR
ELEVATIONS

1B



SCALE: 3/16" = 1'0"

DRAWN BY A. J. FEITH REGIONAL SALES CONSULTANT WESTCHESTER MODULAR HOMES, INC.	BUILDER:	USE GROUP:	MANSFIELD FIRST FLOOR	PAGE:	2A
	HOMEOWNER:	5B			
DATE:	JULY 2012				



DRAWN BY A. J. FEITH
 REGIONAL SALES CONSULTANT
 WESTCHESTER MODULAR
 HOMES, INC.

DATE:
 JULY 2012

BUILDER:

HOMEOWNER:

USE GROUP

5B

CONST. TYPE:

WOOD
 FRAME

MANSFIELD

FOUNDATION

PAGE: