



SCALE: 1/4" = 1'0"

DRAWN BY A. J. FEITH
REGIONAL SALES CONSULTANT
WESTCHESTER MODULAR
HOMES, INC.

BUILDER:

DATE:
JULY 2012

HOMEOWNER:

USE GROUP
5B

CONST. TYPE:
WOOD
FRAME

NEWPORT

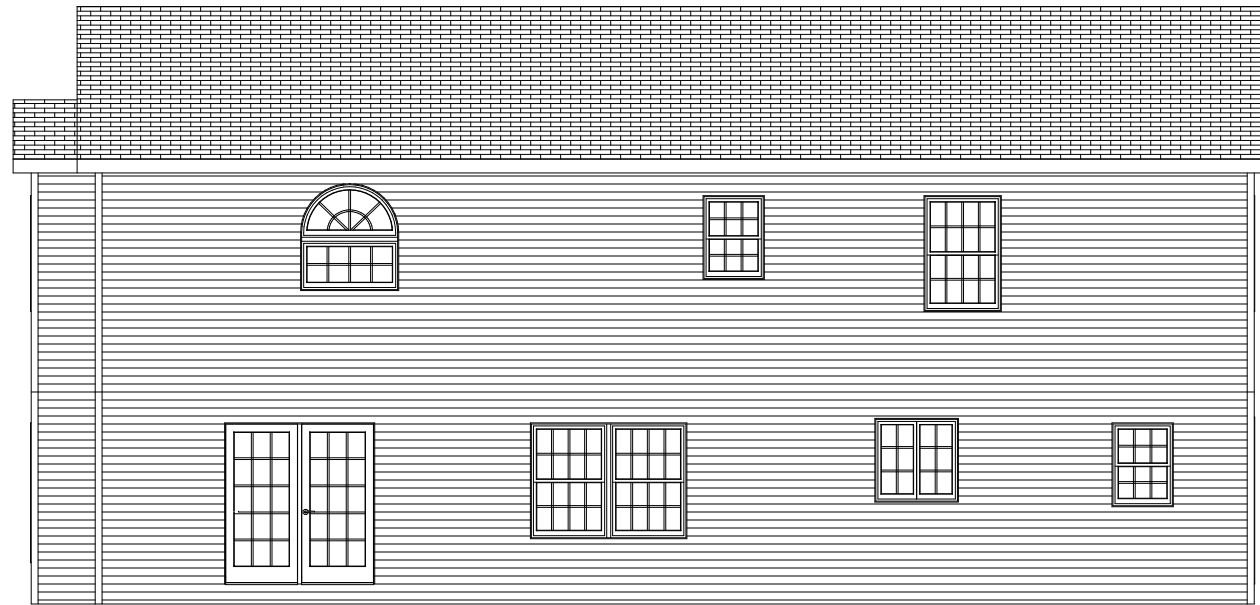
FRONT ELEVATION

PAGE:

1A



LEFT



REAR



RIGHT

SCALE: 1/8" = 1'0"

DRAWN BY A. J. FEITH
REGIONAL SALES CONSULTANT
WESTCHESTER MODULAR
HOMES, INC.

BUILDER:

DATE:

JULY 2012

HOMEOWNER:

USE GROUP

5B

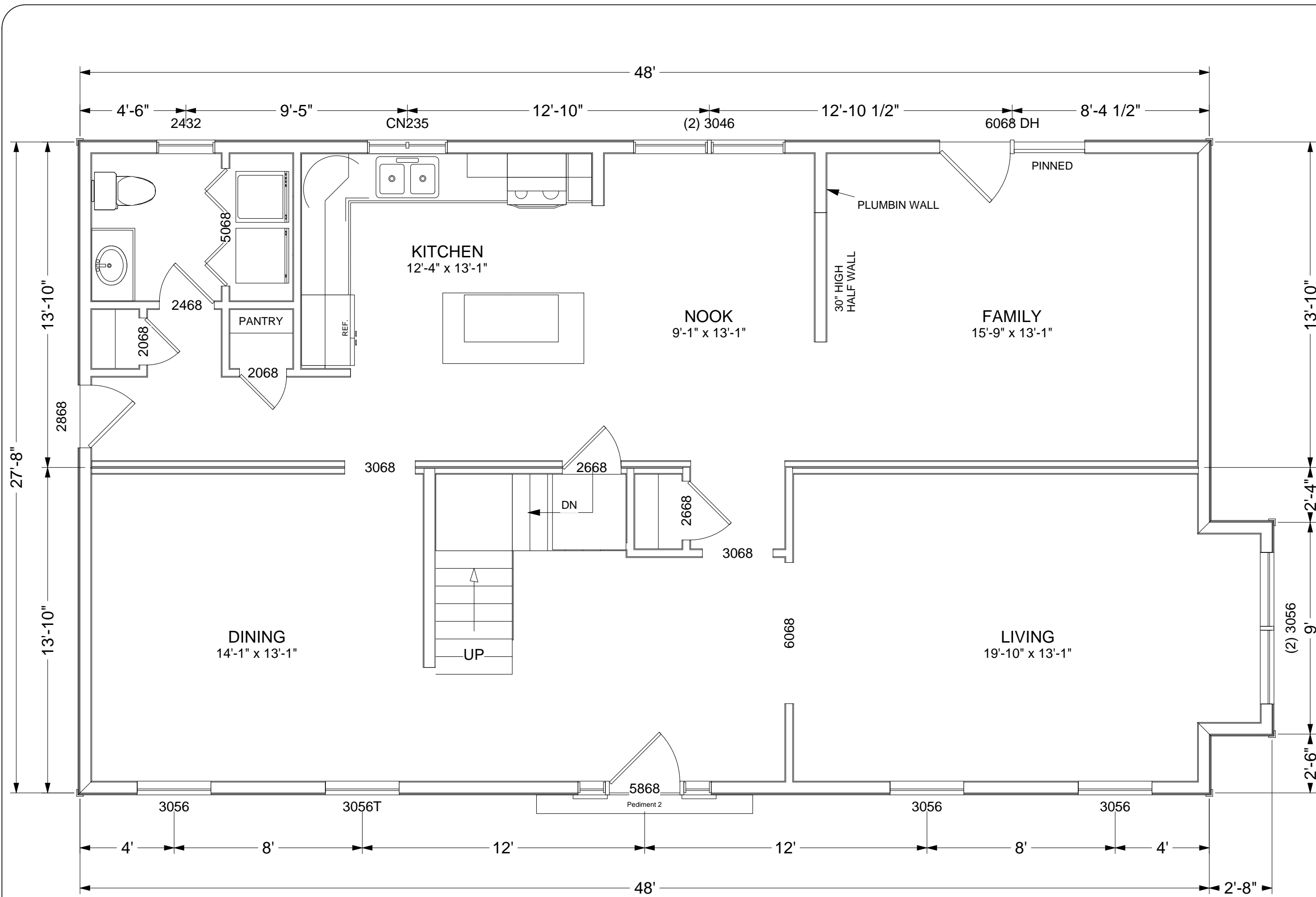
CONST. TYPE:

WOOD
FRAME

PAGE:

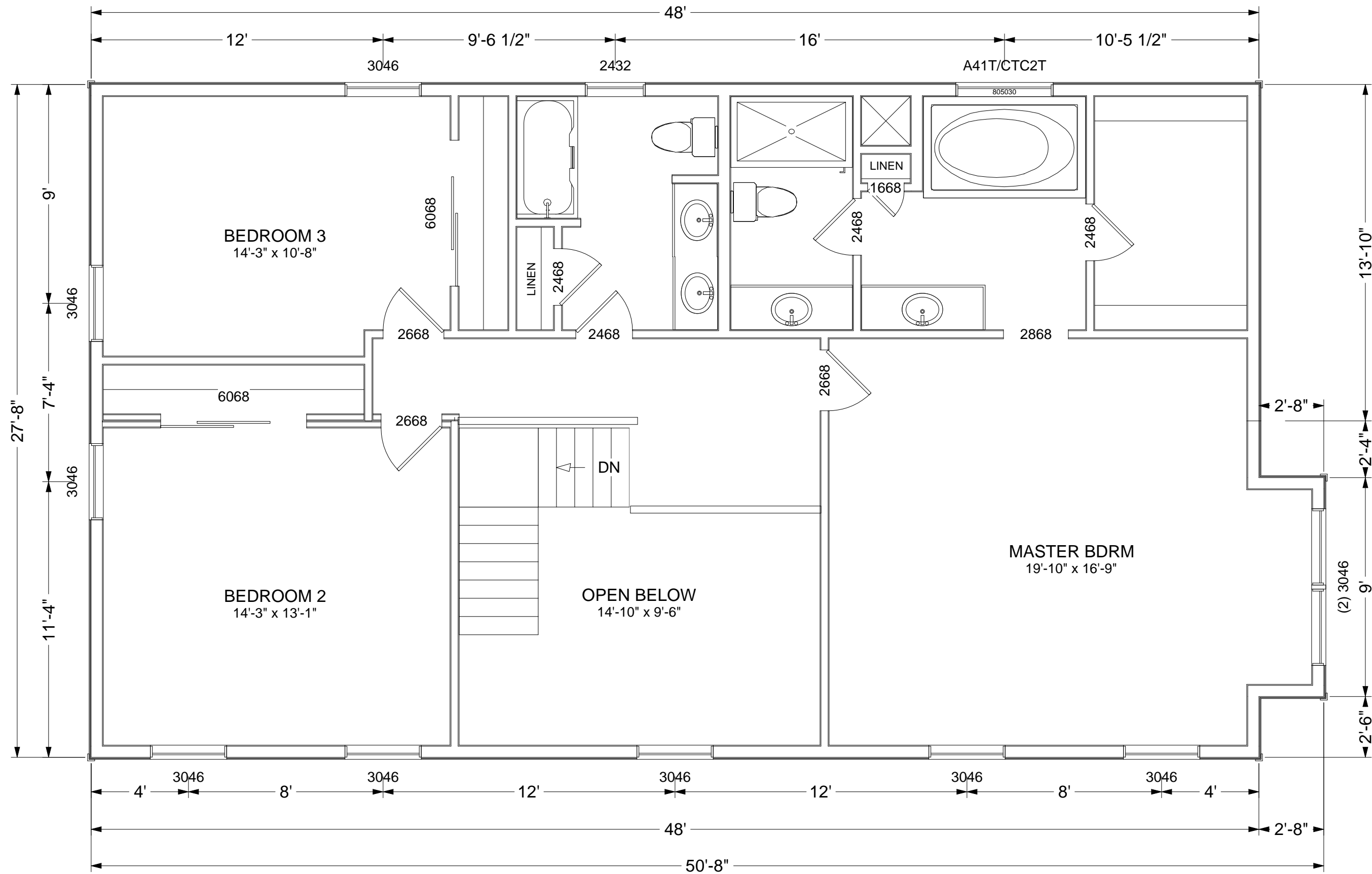
NEWPORT
SIDE AND REAR
ELEVATIONS

1B



SCALE: 1/4" = 1'0"

DRAWN BY A. J. FEITH REGIONAL SALES CONSULTANT WESTCHESTER MODULAR HOMES, INC.		BUILDER:	NEWPORT		PAGE:
DATE: JULY 2012		HOMEOWNER:	FIRST FLOOR		2A
USE GROUP		5B			
CONST. TYPE:		WOOD FRAME			



SCALE: 1/4" = 1'0"

DRAWN BY A. J. FEITH REGIONAL SALES CONSULTANT WESTCHESTER MODULAR HOMES, INC.		BUILDER:	USE GROUP 5B		PAGE: 2B	
DATE: JULY 2012		HOMEOWNER:	CONST. TYPE: WOOD FRAME		NEWPORT SECOND FLOOR	