



SCALE: 1/4" = 1'0"

DRAWN BY A. J. FEITH
 REGIONAL SALES CONSULTANT
 WESTCHESTER MODULAR
 HOMES, INC.

BUILDER:

DATE:
 JULY 2012

HOMEOWNER:

USE GROUP

5B

CONST. TYPE:

WOOD
 FRAME

YARMOUTH

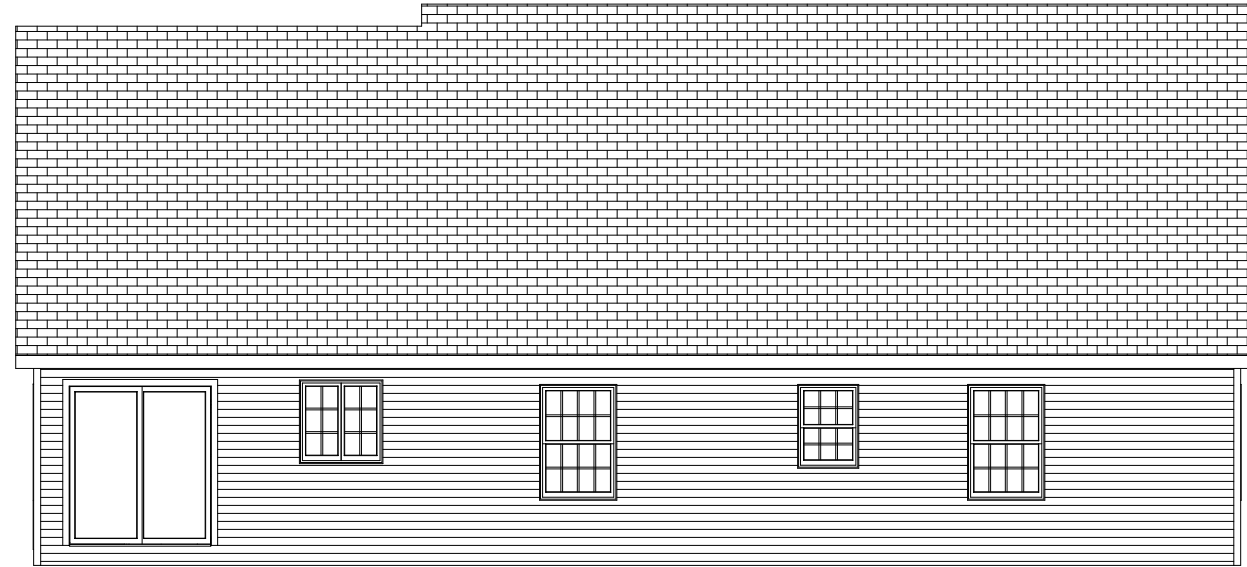
FRONT ELEVATION

PAGE:

1A



LEFT



REAR



RIGHT

SCALE: 1/8" = 1'0"

DRAWN BY A. J. FEITH
REGIONAL SALES CONSULTANT
WESTCHESTER MODULAR
HOMES, INC.

BUILDER:

DATE:
JULY 2012

HOMEOWNER:

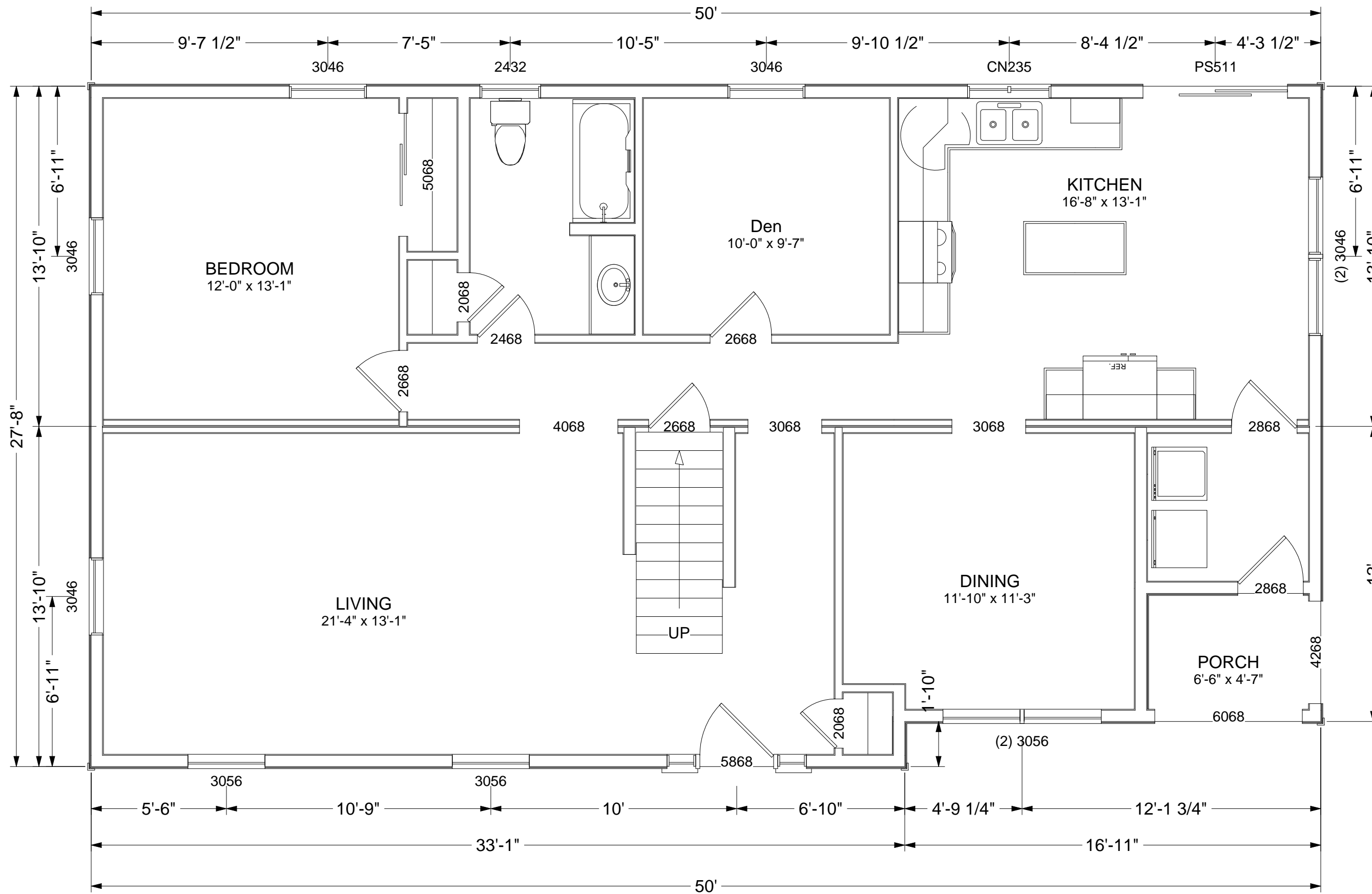
USE GROUP
5B

CONST. TYPE:
WOOD
FRAME

YARMOUTH
SIDE AND REAR
ELEVATIONS

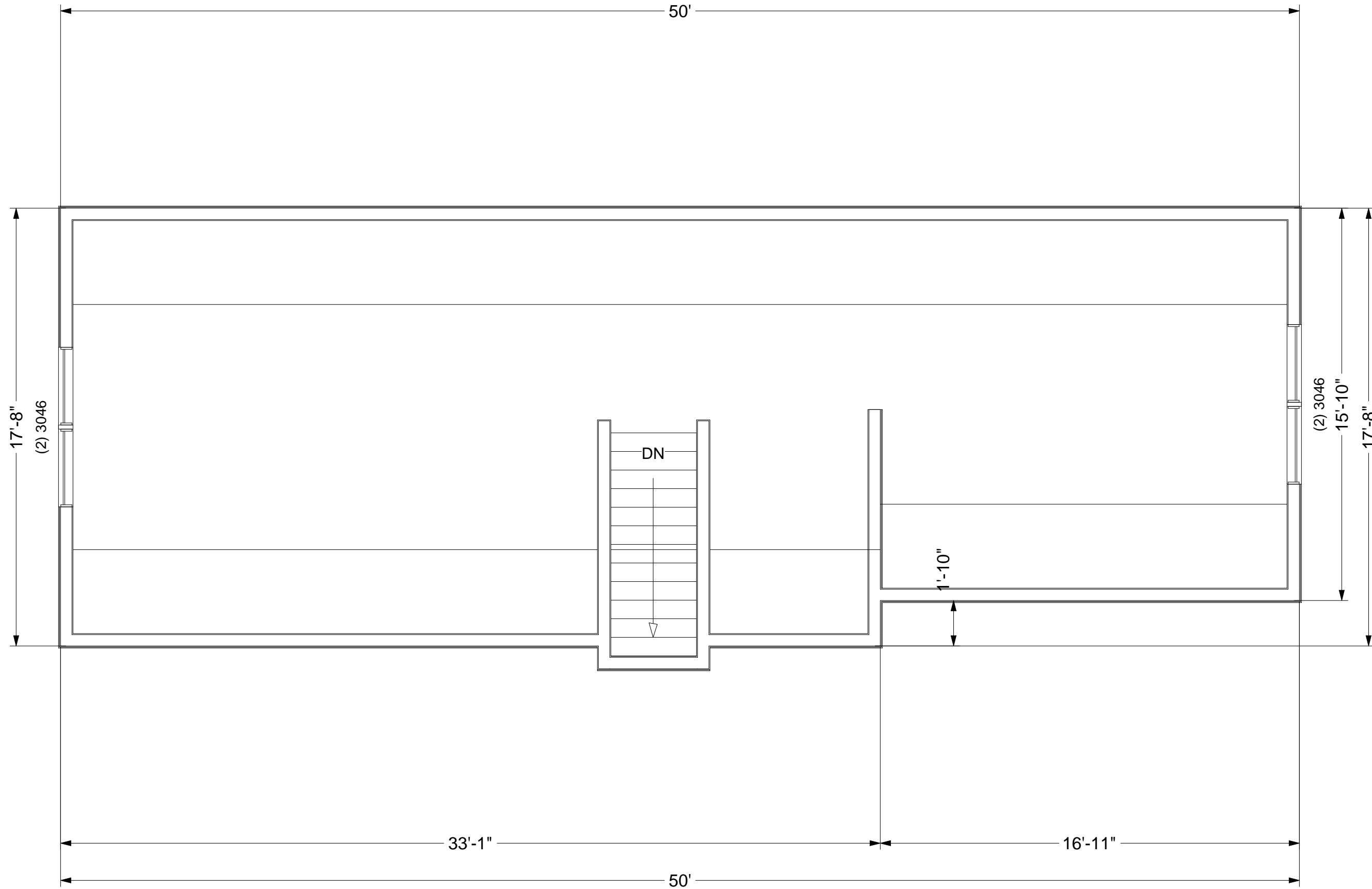
PAGE:

1B



SCALE: 1/4" = 1'0"

DRAWN BY A. J. FEITH REGIONAL SALES CONSULTANT WESTCHESTER MODULAR HOMES, INC.		BUILDER:		USE GROUP 5B		PAGE: 2A	
DATE: JULY 2012		HOMEOWNER:		CONST. TYPE: WOOD FRAME		FLOOR PLAN	



SCALE: 1/4" = 1'0"

DRAWN BY A. J. FEITH REGIONAL SALES CONSULTANT WESTCHESTER MODULAR HOMES, INC.	BUILDER:	USE GROUP	PAGE:
	HOMEOWNER:	5B	
DATE: JULY 2012		WOOD FRAME	YARMOUTH SECOND FLOOR UNFINISHED