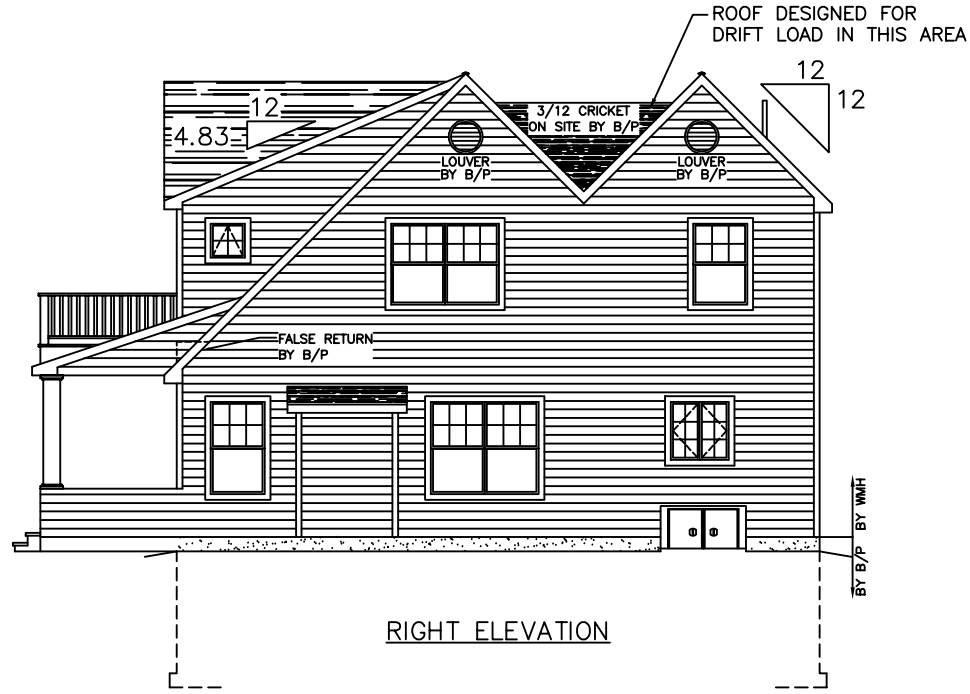
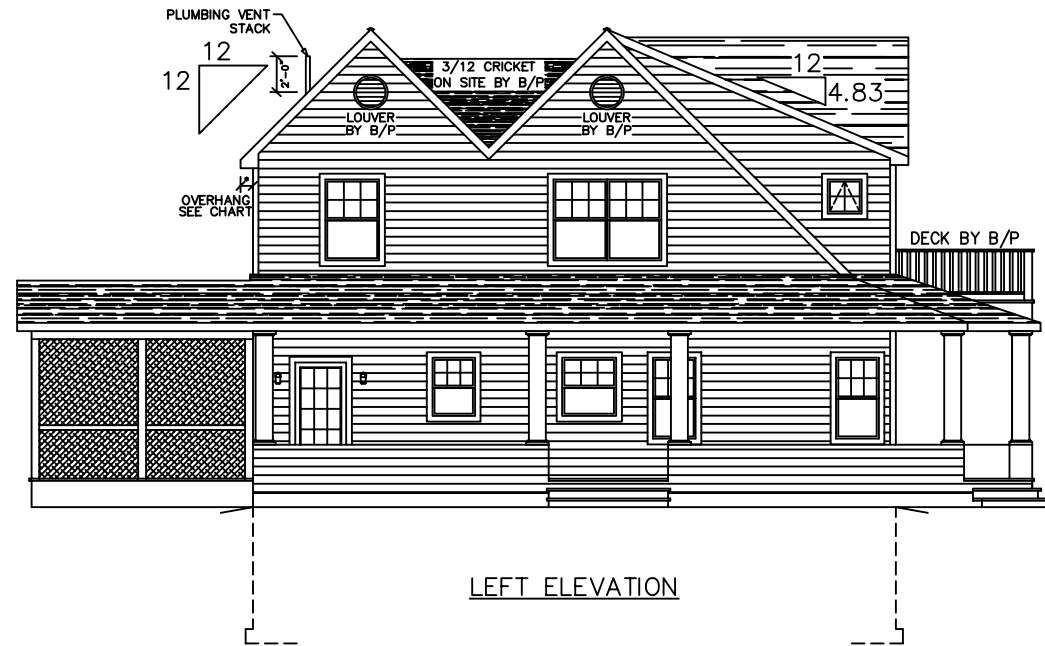




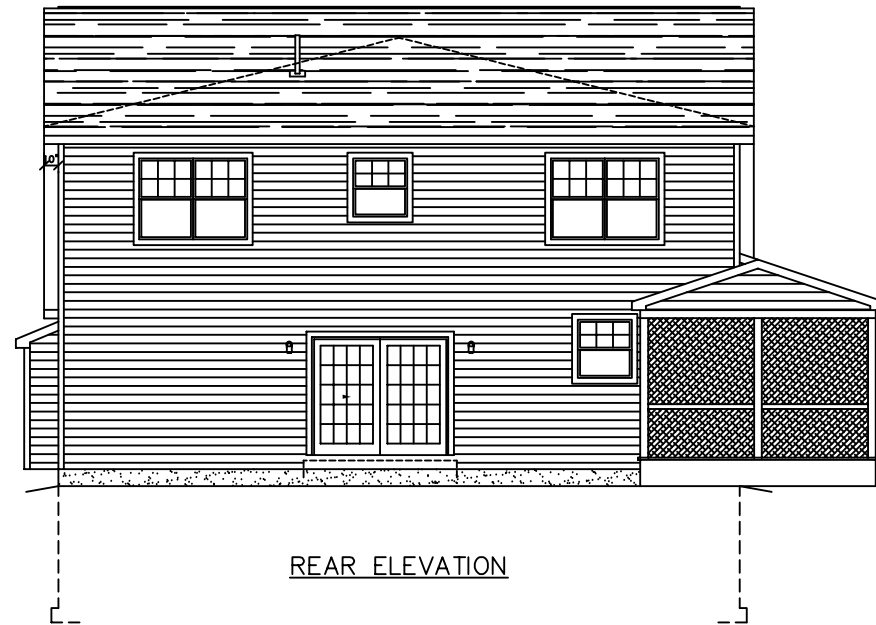
FRONT ELEVATION



RIGHT ELEVATION



LEFT ELEVATION




REAR ELEVATION

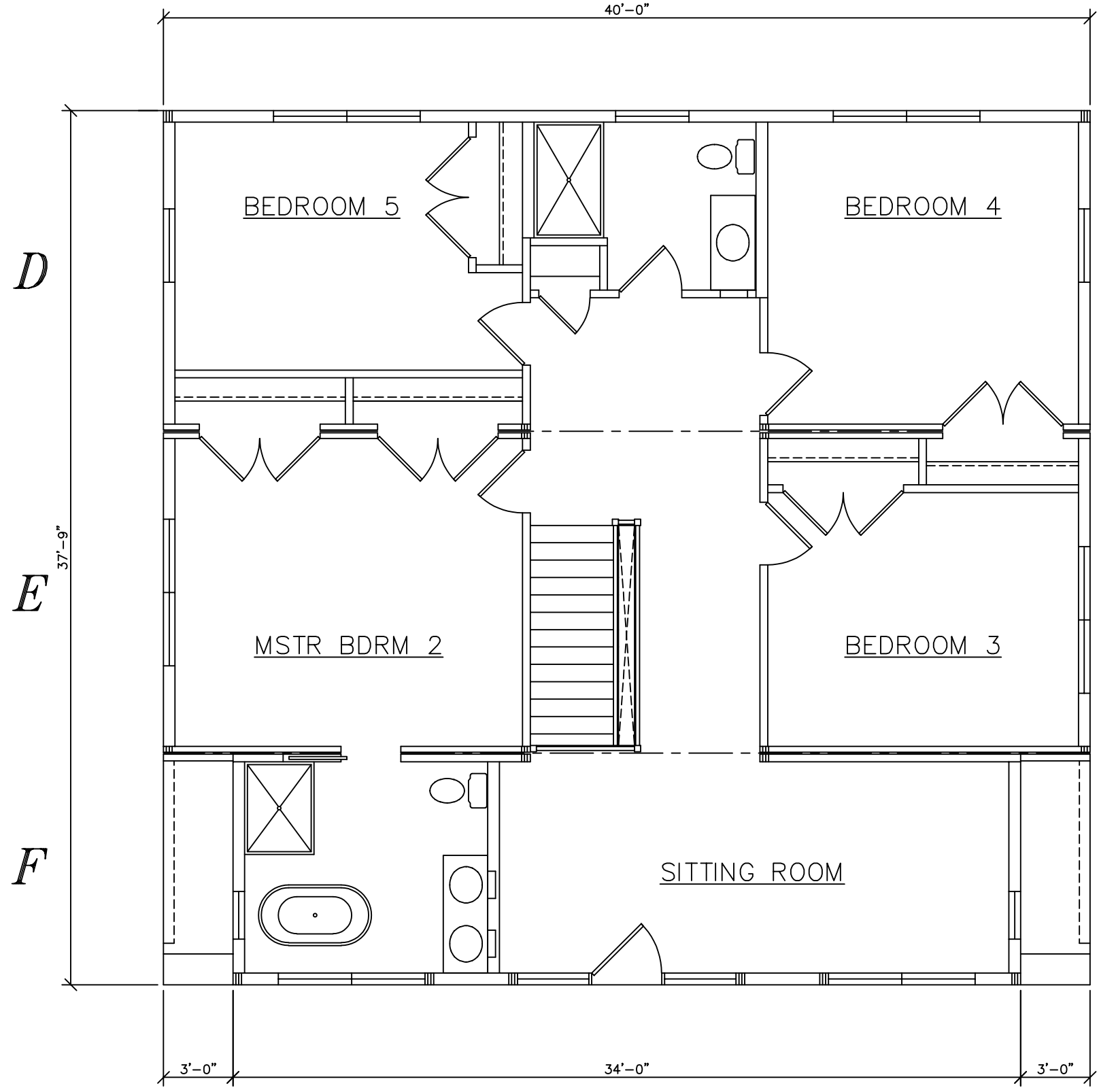
SEE STANDARD NOTES & DETAILS DWG #8

USE GROUP: <b>R3</b>	BUILDER:	SERIAL No. <b>16251</b>	THIRD PARTY INSPECTION AGENCY
CONST. TYPE: WOOD (WB) FRAME (VB)	HOMEOWNER:	PRODUCTION No. <b>6855</b>	PE / RA
DESIGNER: <b>V. GIORGIO</b>	<b>COLONIAL CTM-L ELEVATIONS</b>	REVISION	DATE
DATE: 12/15/16			01/31/17
SCALE: 1/8" = 1'-0"	<p>Westchester Modular Homes Inc 30 Reagans Mill Road, Wingdale, New York, 12594 Tel (845)832-9400 Fax (845)832-6698</p>	CHECK	DATE
PAGE: <b>1 A</b>		V. GIORGIO	10/12/07



SEE STANDARD NOTES & DETAILS DWG #8

USE GROUP: <b>R3</b>	BUILDER:	HOMEOWNER:	SERIAL No. <b>16251</b>	THIRD PARTY INSPECTION AGENCY
CONST. TYPE: WOOD FRAME (VB)				
DESIGNER: <b>V. GIORGIO</b>				
DATE: 12/15/16				
SCALE: 1/4" = 1'-0"				
PAGE:				
<b>COLONIAL CTM-L</b>			PRODUCTION No. <b>6855</b>	PE / RA
			REVISION	DATE
 <b>Westchester Modular Homes Inc</b> 30 Reagans Mill Road, Wingdale, New York, 12594 Tel (845)832-9400 Fax (845)832-6698			CHECK	DATE



SEE STANDARD NOTES & DETAILS DWG #8

USE GROUP: <b>R3</b>	BUILDER:	HOMEOWNER:	SERIAL No. <b>16251</b>	THIRD PARTY INSPECTION AGENCY
CONST. TYPE: WOOD FRAME (VB)	PRODUCTION No. <b>6855</b>			PE / RA
DESIGNER: <b>V. GIORGIO</b>	REVISION			DATE
DATE: 12/15/16			01/31/17	02/13/17
SCALE: 1/4" = 1'-0"				
PAGE:			CHECK	DATE
		<b>COLONIAL CTM-L</b>		