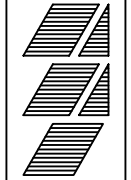


SEE STANDARD NOTES & DETAILS DWG #8

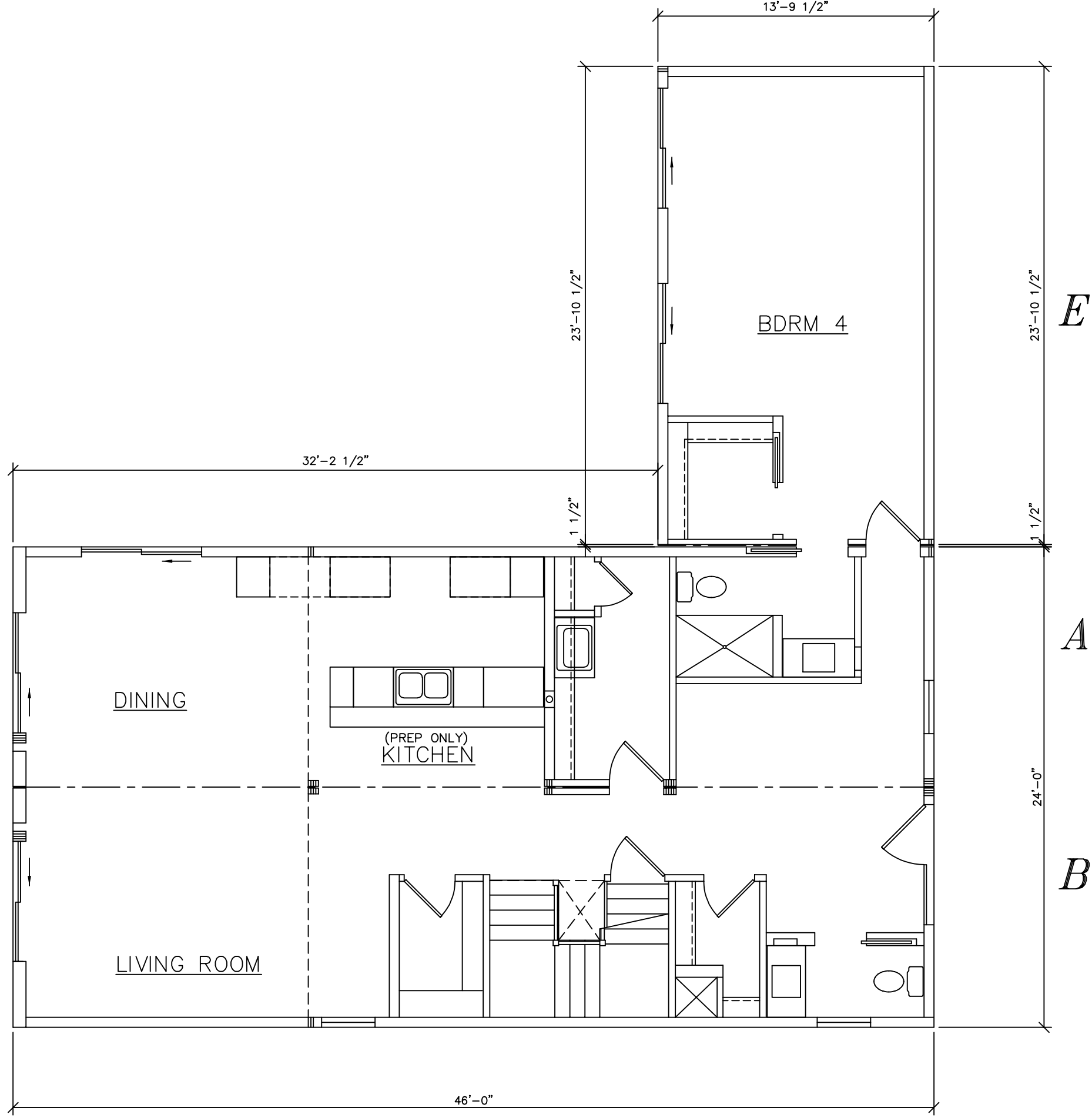
USE GROUP: DETACHED SINGLE FAMILY DWELING	BUILDER:	SERIAL No. 22174	THIRD PARTY INSPECTION AGENCY
CONST. TYPE: WOOD FRAME UNPROTECTED	HOMEOWNER:	PRODUCTION No. 7914	PE / RA
DESIGNER: RRC		REVISION	
DATE: 10/07/22		DATE	
SCALE: AS NOTED		CHECK	
PAGE: 1		STD REVISION	01/10/15

**COLONIAL CTM-L
ELEVATIONS**

Westchester Modular Homes Inc
30 Reagans Mill Road, Wingdale, New York, 12594
Tel (845)832-9400 Fax (845)832-6698



SEE STANDARD NOTES & DETAILS DWG #8



FRONT

USE GROUP:
DETACHED SINGLE
FAMILY DWELING
CONST. TYPE:
WOOD FRAME
UNPROTECTED
DESIGNER:
RC
DATE:
10/07/22
SCALE:
1/4" = 1'-0"
PAGE:

BUILDER:

COLONIAL CTM-L



Westchester Modular Homes Inc
30 Reagans Mill Road, Wingdale, New York, 12594
Tel (845)832-9400 Fax (845)832-6698

HOMEOWNER:

SERIAL No. 22174

PRODUCTION No. 7914

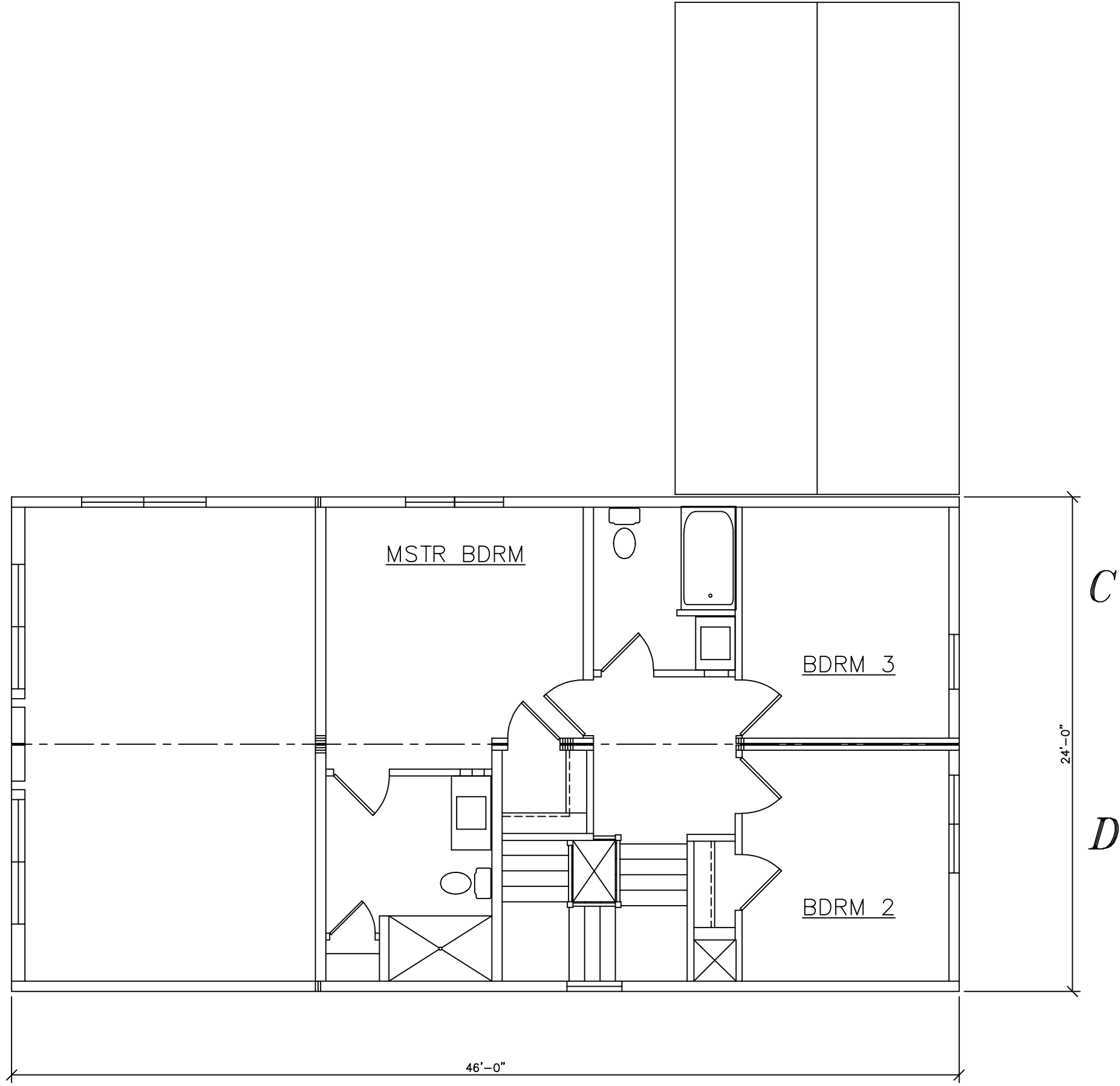
REVISION	DATE
RC	06/01/22
	07/21/22
	10/04/22

CHECK	DATE

PE / RA

THIRD PARTY INSPECTION AGENCY

SEE STANDARD NOTES & DETAILS DWG #8



USE GROUP:
DETACHED SINGLE
FAMILY DWELING
CONST. TYPE:
WOOD FRAME
UNPROTECTED
DESIGNER:
RC
DATE:
10/07/22
SCALE:
1/4" = 1'-0"
PAGE:

BUILDER:

COLONIAL CTM-L



Westchester Modular Homes Inc
30 Reagans Mill Road, Wingdale, New York, 12594
Tel (845)832-9400 Fax (845)832-6698

HOMEOWNER:

SERIAL No. **22174**

PRODUCTION No. **7914**

REVISION	DATE
RC	06/01/22
	07/21/22
	10/04/22

CHECK	DATE

PE / RA

THIRD PARTY INSPECTION AGENCY