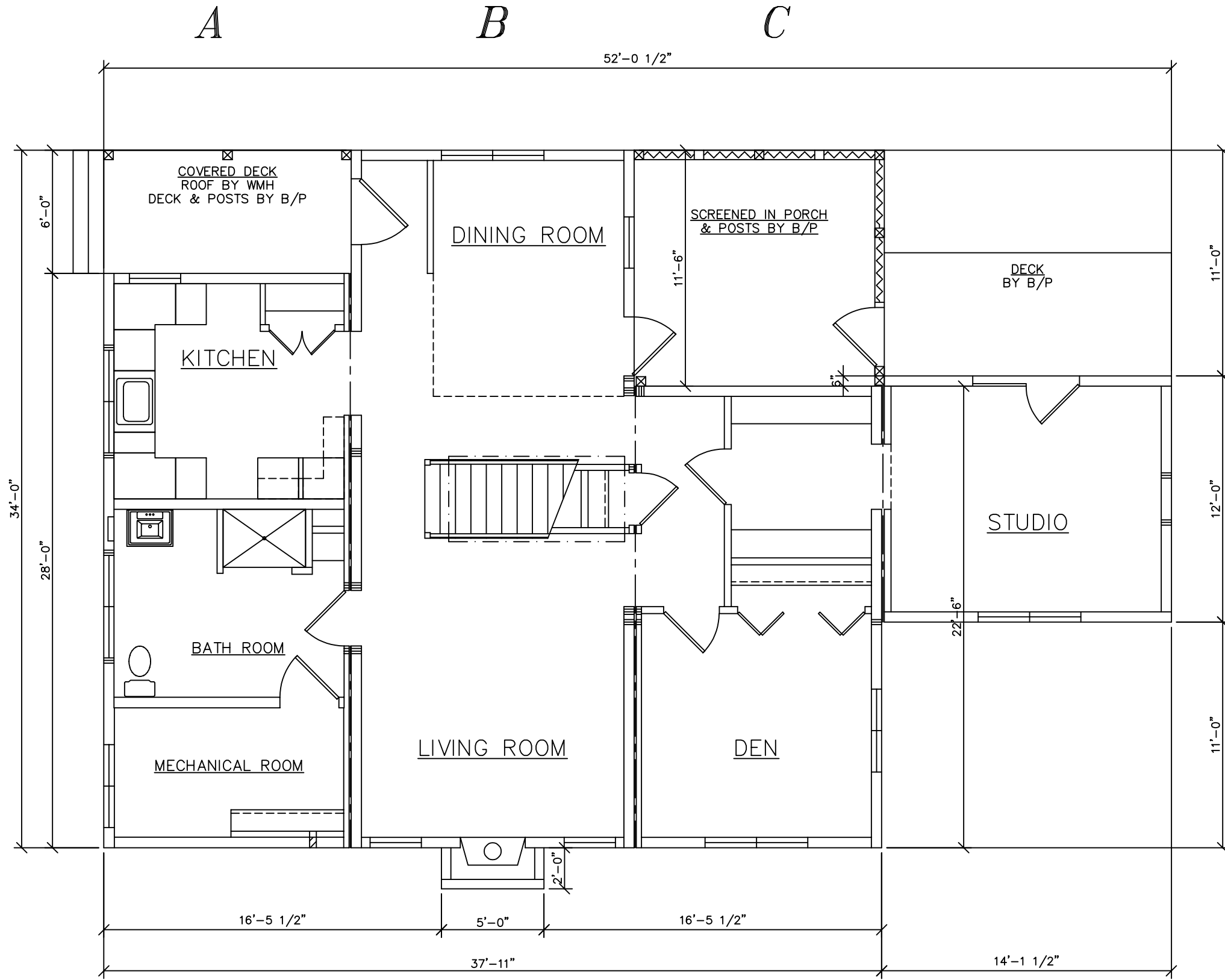





**FRONT**



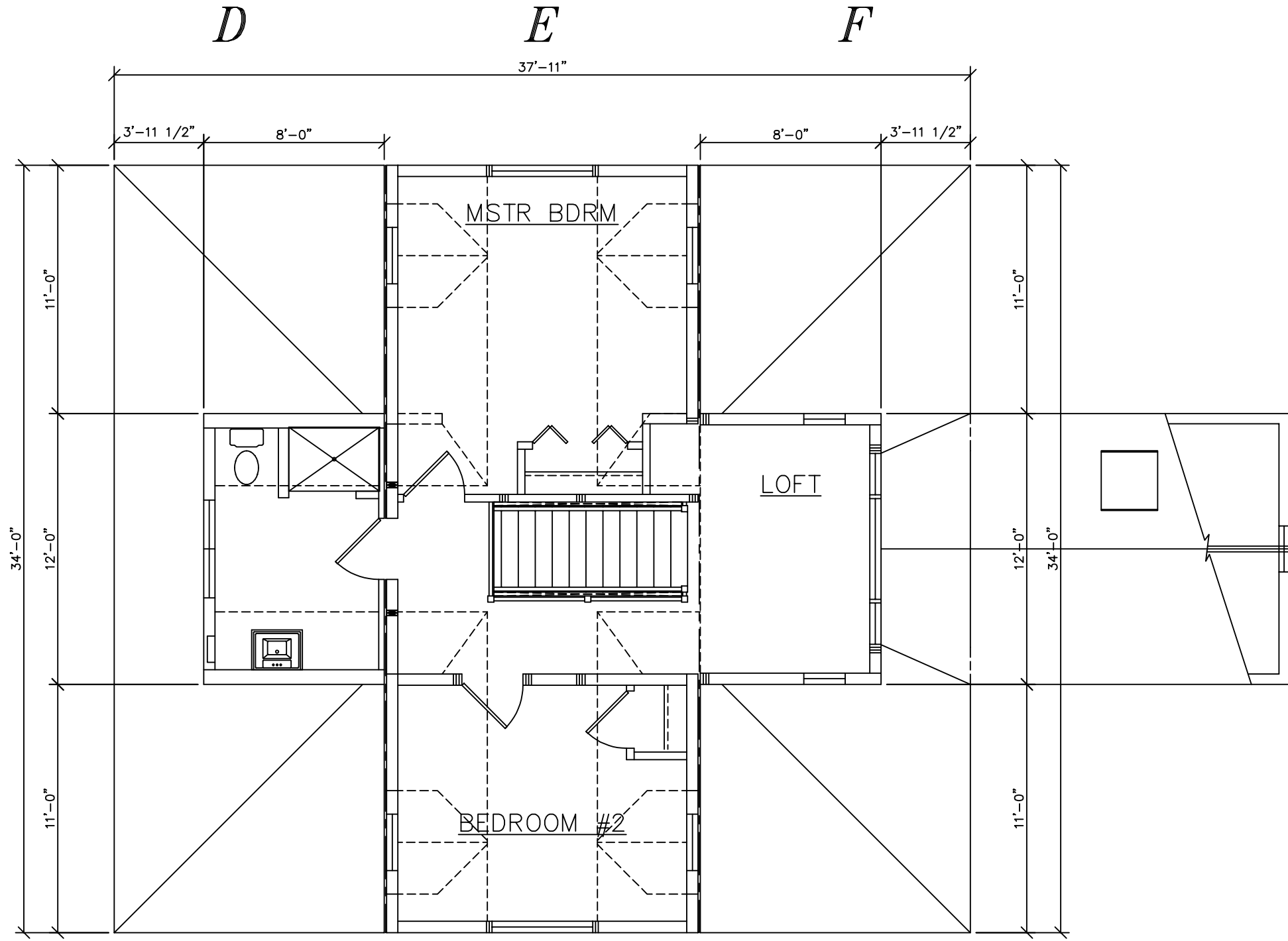
\*ANDERSEN 400 SERIES SDL WINDOWS W/ SPECIAL GRILLE PATTERN\*

SEE STANDARD NOTES & DETAILS DWG #8

USE GROUP: <b>R3</b>	BUILDER:	HOMEOWNER:	SERIAL No. <b>11036</b>	THIRD PARTY INSPECTION AGENCY	
CONSTR. TYPE: WOOD FRAME (VB)			PRODUCTION No. <b>5815</b>	PE / RA	
DESIGNER: <b>V. GIORGIO</b>	<b>COLONIAL CTM-R</b>			REVISION	
DATE: 04/15/11				DATE 05/24/11	
SCALE: 1/4" = 1'-0"				CHECK	DATE
PAGE:					
		<b>Westchester Modular Homes Inc</b> 30 Reagans Mill Road, Wingdale, New York, 12594 Tel (845)832-9400 Fax (845)832-6698			



**FRONT**



\*SPECIAL WALL HEIGHTS ENTIRE 2ND FLOOR\*  
\*9'-0" 2ND FLOOR CEILING HEIGHT PER PLAN\*  
\*ANDERSEN 400 SERIES SDL WINDOWS W/ SPECIAL GRILLE PATTERN\*

SEE STANDARD NOTES & DETAILS DWG #8

USE GROUP: <b>R3</b>	BUILDER:	HOMEOWNER:	SERIAL No. <b>11036</b>	THIRD PARTY INSPECTION AGENCY
CONST. TYPE: WOOD FRAME (VB)			PRODUCTION No. <b>5815</b>	PE / RA
DESIGNER: <b>V. GIORGIO</b>	<b>COLONIAL CTM-R</b>		REVISION	
DATE: 04/15/11			DATE 05/24/11	
SCALE: 1/4" = 1'-0"			CHECK	DATE
PAGE:				

**Westchester Modular Homes Inc**  
 30 Reagans Mill Road, Wingdale, New York, 12594  
 Tel (845)832-9400 Fax (845)832-6698

